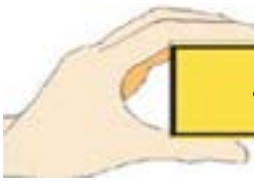


Symptomatic Exam-1 Begins



05 - TEXTURE

Texture is the first Symptomatic Descriptive Feature (SD-Feature) of the Hands & Wrists skin that holds the key to knowledge of a persons natural refinement. Confine this examination to the back of the hand "Capillaries" is what hair grows out of, the bore or the pores. Large pores grow coarse hair and this defines coarse texture. Small pores are difficult to see and define fine texture. This will help you confirm your examination of skin texture. Once you have compared your own texture with others, use your Texture as a comparison or standard to examine others.



005_01 --> IS THE TEXTURE OF YOUR SKIN FINE?

Feel the back of the hand's skin does it feel fine and smooth with small pores growing fine hair difficult to see? The skin may also feel soft and delicate to the touch, like a baby's skin.

005_02 --> IS THE TEXTURE OF YOUR SKIN COARSE?

Feel the back of the hand's skin does it feel rough and coarse having large pores growing coarse hair easy to see? The skin may also feel leather-like compared with soft, flexible skin.

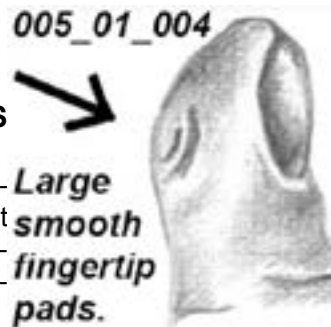
005_03--> IS THE TEXTURE OF YOUR SKIN MEDIUM?

Does the back of the hand have medium pores growing medium hair? The skin doesn't show delicate pores like a baby's hand, nor is it coarse. The skin feels elastic, not soft; firm or hard.



005_04--> ARE THE FINGERTIP PADS LARGE AND SMOOTH?

Observe the Dermatoglyphic fingerprints and/or the inside part of the first phalanges of all fingers. In many cases this pad of flesh will be quite prominent, having smooth fingerprints.



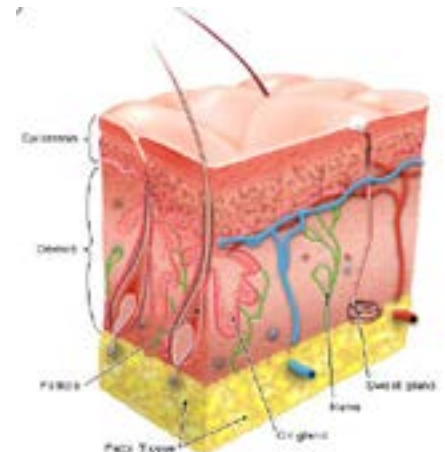
Tips & Notes

TEXTURE 05...

...must be understood before you start this examination. By comparing the hand to the book it then becomes 2nd nature via repetitious examination. Eventually it won't be necessary to read and / or execute every test.

TIP--> 005_01 TO _04

Please record any irregular SD-Features by doing either a physical, Visual, feel test, etc. using Q & A questionnaires. It must be present or obvious to be recorded. When in doubt leave out and continue on.



005 Primary Skin Lesions

Tips & Notes

CONSISTENCY 010...

...must be understood before you start this examination. By comparing the hand to the book it then becomes 2nd nature via repetitious examination. Eventually it won't be necessary to read and / or execute every test.

TIP: 010_01 TO _04

Please record any irregular SD-Features by doing either a physical, Visual, feel test, etc. using Q & A questionnaires. It must be present or obvious to be recorded. When in doubt leave out and continue on.

10 - CONSISTENCY

Consistency of the hands can tell how well someone's energies is directed. It can be determined by placing your thumb in the center of the palm, fingers on the back and thumb in the palm then press them together like pliers. As you repeatedly close your thumb and finger together you should be able to select one of the following consistencies explained below. The roughness or softness of the skin should be ignored.

010_01--> ARE THE HANDS FLABBY?

As you close the thumb and finger together, the flabby hand offers no resistance to pressure. As you squeeze the hand firmly, the flesh and bones seem to squeeze together. Thumbs will also be seemingly quite flat, looking as though they have been pressed until the substance has gone out of them. People with flat thumbs usually have flabby hands.



010_02--> ARE THE HANDS SOFT?

As you close your thumb and finger together, the soft hand will not have the boneless, flabby feeling, yet it will be soft. You will find more difficulty among women in distinguishing the flabby hand from the soft, for women's hands are naturally softer than men's. But by observing the lack of bony feeling in the hand under pressure, and following closely the description of the flabby hand, you will attain a clear idea of how to distinguish between the two.

010_03--> ARE THE HANDS ELASTIC?

As you close your thumb and finger together, the center of the hand should have the feeling of elastic resistance. It seems, when pressed with the tip of your thumb, the flesh rebounds like rubber. It lacks entirely the spongy quality of flabby or soft hands. You will find it best exemplified among active men and women, those who not only talk but also act. Turger test is ideal.



010_04--> ARE THE HANDS HARD?

As you close your thumb and finger together, the hard hand will not be encountered as often as soft or elastic hands because extreme types are much rarer than might be thought. The hard hand will give no sign of yielding under pressure; it will have no spring, no elasticity, but a hardness that resists any effort to dent it. The skin will be coarser in texture.

Updated Feb. 25th, 2023

15 - FLEXIBILITY

Flexibility of the hand shows the degree of flexibility of the mind. Flexibility is shown by how easily the hand bends backwards. As an example for yourself or others, start with the Active hand pointing up. Exert pressure downward with the other hand. Bend it as far backwards as possible. Repeat with the other hand. Notice whether the whole hand is flexible or whether the bending occurs only at the knuckle joints. Be careful of injured or arthritic hands.

015_01--> ARE THE HANDS STIFF AND DIFFICULT TO OPEN?

The hand which is stiff and difficult to open has fingers forming a curve inwards. A person with a stiff hand has difficulty closing the hand into a fist and then opening it. Movements are slower than those of an average person and the fingers will not straighten themselves out



015_02--> ARE THE HANDS MEDIUM OR NORMAL?

When pressed backwards, these hands open readily until the fingers straighten themselves naturally, so that the hands open with ease to their full extent.

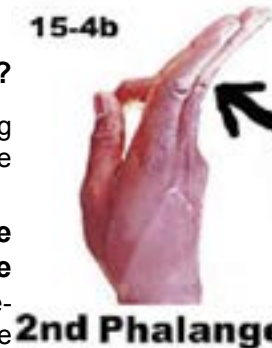
015_03--> DO THE HANDS FLEX IN THE EXTREME, KNUCKLES?

The fingers bend back at the knuckles without giving pain, until a 90 degree angle is formed. The fingers seem mobile, the bones are like a cartilage.



015_04--> IS THERE FLEXIBILITY WITH THE 1ST OR 2ND PHALANGES?

The 1st or 2nd phalanges of the fingers are flexible; the rest of the hand is normal.



015_01--> ARE BOTH HANDS FLEXIBLE?

Shows whether you are improving in mentality or going in the opposite direction.

ADD--> 015_01_001--> Is the Passive hand stiff and the Active hand flexible? Remember, the Passive hand is the left hand, if you are right-handed.

ADD--> 015_01_002--> Is the Passive hand flexible and the Active hand stiff? Remember, the Passive hand is the left hand, if you are right-handed.

Tips & Notes

FLEXIBILITY 10...

...must be understood before you start this examination. By comparing the hand to the book it then becomes 2nd nature via repetitious examination. Eventually it won't be necessary to read and / or execute every test.

TIP--> 015_01 TO _05

Please record any irregular SD-Features by doing either a physical, Visual, feel test, etc. using Q & A questionnaires. It must be present or obvious to be recorded. When in doubt leave out and continue on.

TIP--> 015_03 TO _05

Do to stiffness it may be necessary for your client to execute their own test based on your show-and-tell instructions as seen in the image on the illustration. If arthritis or any other physical impairment is present please ignore and continue with your next descriptive examination.

File ID: EIM_Manual Chptr-2 Pg 077-082 Exam-1 Tutorial 8x11.pdf

Tips & Notes

COLOUR 020...

...must be understood before you start this examination. By comparing the hand to the book it then becomes 2nd nature via repetitious examination. Eventually it won't be necessary to read and / or execute every test.

TIP: 020_01 TO _05

Please record any irregular SD-Features by doing either a physical, Visual, feel test, etc. using Q & A questionnaires. It must be present or obvious to be recorded. When in doubt leave out and continue on.

20 - COLOR

Temperament and indications of health or diseases are shown by the color of the hands. The temperature of the room must be just right, say 70 degrees F., to correctly judge color. Anything that accelerates or retards the flow of blood will affect the color of the hand. When examining the hand for color, be guided largely by the palm, not the back of the hand, and look at the Palmography indentations and the nails as well. A combination of these factors can accurately determine the normal color of any hand.



020_01--> IS THE COLOR DEAD WHITE?

Learn to recognize the watery, pallid look of a dead-white hand, the corpse-like whiteness that means a lack of heat, one which gives an impression of a lack of blood supply. This is not a white hand which is white only because of fineness. Any hand may have this pallid whiteness, which indicates a lack of red corpuscles in the blood. You can also use the nails as an indication of color. Nails give a clue to the predominant quality — coldness — of the white hand.



020_02--> IS THE COLOR PINK?

As whiteness shows deficiency of blood supply, pink shows a normal amount of blood. Learn to recognize the color of the nail well, because all hand colors can be judged from it.



020_03--> IS THE COLOR RED?

Redness must be a clear, full red, not a pink or dark pink.

020_04--> IS THE COLOR YELLOW?

Yellow can be caused by a vacation in a warm climate. The hand may be “bleached out.” You can also use the nails to judge color.

020_05--> IS THE COLOR BLUE OR PURPLE?

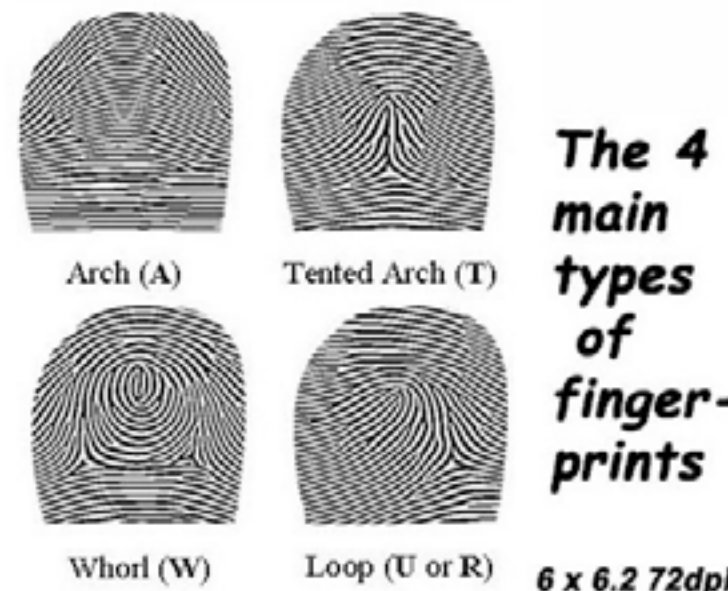
Two kinds of blueness must be distinguished, one which tinges the whole nail and the other which settles darkly at the base. Blueness or purpleness is usually caused by improper circulation of the blood. This is not necessarily a negative quality, however. It is useful to consider this blue color primarily from the health aspect; beyond showing physical weakness, poor circulation does not in any marked degree affect temperament.

Updated Feb. 25th, 2023

23 - FINGERPRINTS

Fingerprints are tremendously important, because they represent the most basic and unchangeable elements of our personalities. We can learn to modify these basic traits, but we can never get rid of them. Technically, the study of these fine ridges in the skin is called “dermatoglyphics.” Ridge lines in the skin run all over the palms and soles.

023_Fingerprints



023_01--> ARE ALL OR MOST OF THE FINGERPRINTS WHORL-TYPE?

- ADD--> 023_01_001--> Is the 1st fingerprint Concentric or Spiral whorl-type?
- ADD--> 023_01_002--> Is the 2nd fingerprint Concentric or Spiral whorl-type?
- ADD--> 023_01_003--> Is the 3rd fingerprint Concentric or Spiral whorl-type?
- ADD--> 023_01_004--> Is the 4th fingerprint Concentric or Spiral whorl-type?
- ADD--> 023_01_005--> Is the thumb print Concentric or Spiral whorl-type?
- ADD--> .023_01_006--> Are the 1st fingerprint & thumb whorl-type?
- ADD--> 023_01_007--> Are the 3rd & 4th fingerprints whorl-type?

File ID: EIM_Manual Chptr-2 Pg 077-082 Exam-1 Tutorial 8x11.pdf

Tips & Notes

FINGERPRINTS 23...

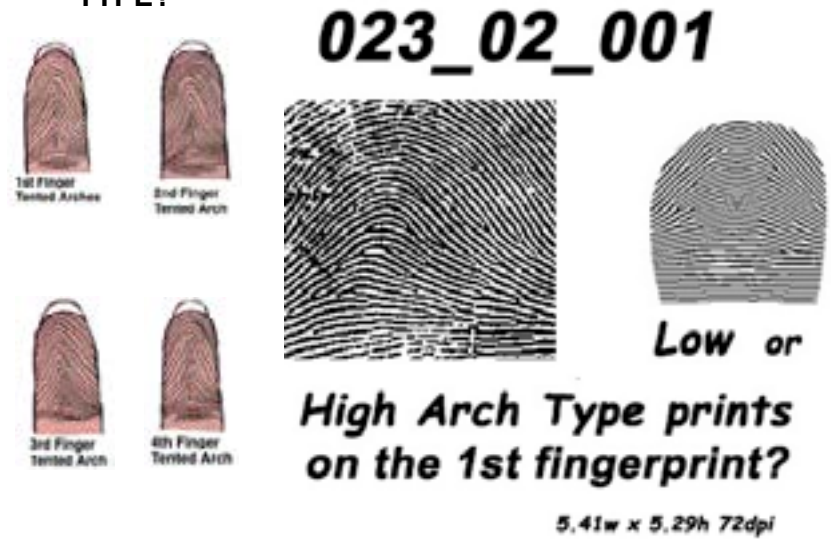
...must be understood before you start this examination. By comparing the hand to the book it then becomes 2nd nature via repetitious examination. Eventually it won't be necessary to read and / or execute every test.

TIP--> 023-1 TO 6

Please record any irregular SD-Features by doing either a physical, Visual, feel test, etc. using Q & A questionnaires. It must be present or obvious to be recorded. When in doubt leave out and continue on.

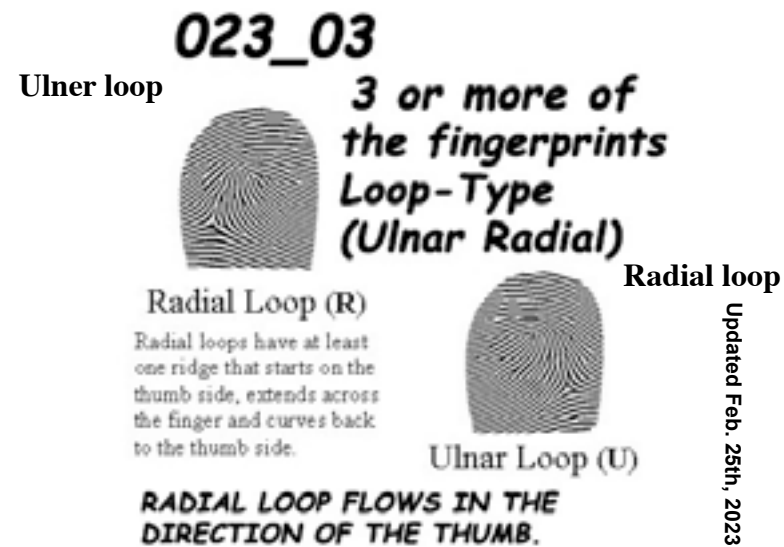
Fingerprints 23 cont...

023_02--> ARE ALL OR MOST OF THE FINGERPRINTS ARCH-TYPE?



- ADD--> 023_02_001--> Is the 1st fingerprint high or low arch-type?
- ADD--> 023_02_002--> Is the 2nd fingerprint high or low arch-type?
- ADD--> 023_02_003--> Is the 3rd fingerprint high or low arch-type?
- ADD--> 023_02_004--> Is the 4th fingerprint high or low arch-type?
- ADD--> 023_02_005--> Is the thumb print high or low arch-type?

023_03--> ARE MOST OF THE FINGERPRINTS LOOP-TYPE (ULNAR RADIAL)?



Fingerprints 23 cont...

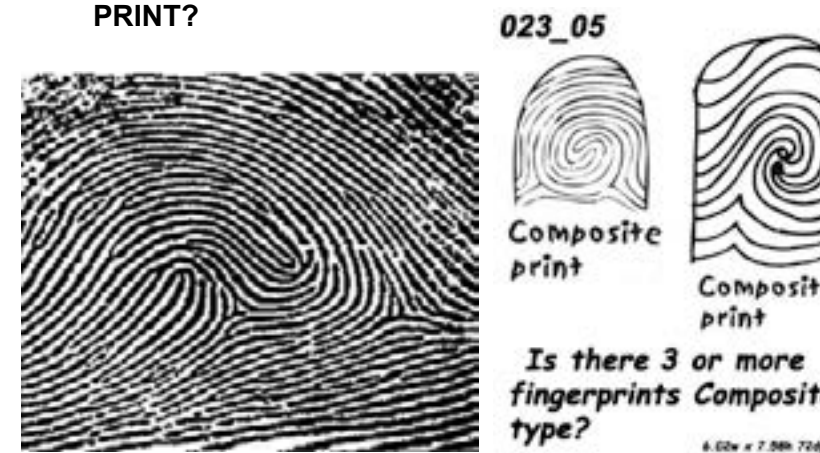
- ADD--> 023_03_001--> Are the 1st fingerprint & thumb left or right loop-type?
- ADD--> 023_03_002--> Is the 1st fingerprint loop-type?
- ADD--> 023_03_003--> Is the 2nd fingerprint loop-type?
- ADD--> 023_03_004--> Is the 3rd fingerprint loop-type?
- ADD--> 023_03_005--> Is the 4th fingerprint loop-type?

023_04--> ARE MOST OF THE FINGERPRINTS TENTED ARCH-TYPE?



- ADD--> 023_04_001--> Is the 1st fingerprint tented arch-type?
- ADD--> 023_04_002--> Is the 2nd fingerprint tented arch-type?
- ADD--> 023_04_003--> Is the 3rd fingerprint tented arch-type?

023_05--> ARE MOST OF THE FINGERPRINTS COMPOSITE PRINT?



File ID: EIM_Manual Chptr-2 Pg 077-082 Exam-1 Tutorial 8x11.pdf

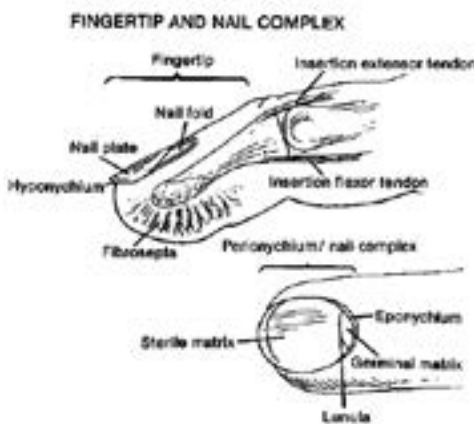
Tips & Notes

TIP--> 023_06

Examine individual fingerprints separately as it is very rare for anyone to have all fingers Peacock's eye fingerprints.

NAILS 25...

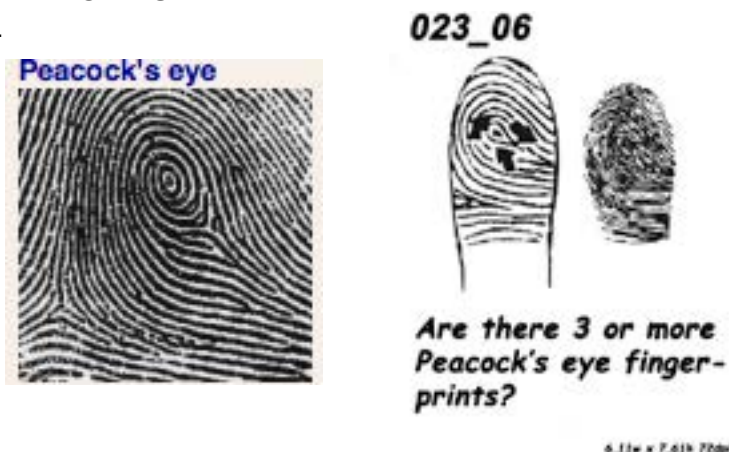
...must be understood before you start your examination. By comparing the hand to the book becomes second nature via repetitious examination. Eventually it won't be necessary to read and / or execute every test.



Fingerprints 23 cont...

- ADD--> 023_05_001--> Is the 1st fingerprint composite print?
- ADD--> 023_05_002--> Is the 2nd fingerprint composite print?
- ADD--> 023_05_003--> Is the 3rd fingerprint composite print?
- ADD--> 023_05_005--> Is the thumb composite print?

023_06--> ARE MOST OF THE FINGERPRINTS SHOWING PEACOCK'S EYE PRINT?

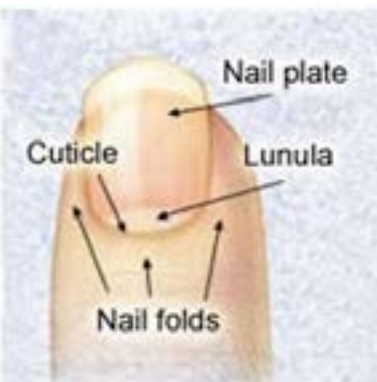


- ADD--> 023_06_001--> 1st fingerprint, peacock's eye print.
- ADD--> 023_06_002--> 2nd fingerprint, peacock's eye print.
- ADD--> 023_06_003--> fingerprint, peacock's eye print.
- ADD--> 023_06_004--> fingerprint, peacock's eye print.

25 - NAILS

The nails are like windows which allow you to look into the interior organization. Nails show quality, just like skin. The nails are composed of minute, hair-like fibers. The fibers are so tightly knit together that they adhere to each other and form a compact, horn-like substance. The part which lies under the nails is called the quick. The nails on the right hand grow faster on right-handed people. Left-hand nails grow faster on lefties. Nails also grow faster in summer and faster during the day than at night. Nails protect delicate fingertip nerve fibers.

The horn of the nail should be even and smooth on the surface. The grain, which runs from top to base, should be smooth, not ridged or fluted. Nail texture is smooth if all the filaments forming the nail substance are



Updated Feb. 25th, 2023

Nails 25 cont...

the same size, while fluted nails occur when fibers of different sizes grow together. Normal nails will be pliable, not brittle, and will look alive and elastic.

The pencil icon defines supplementary Descriptions.

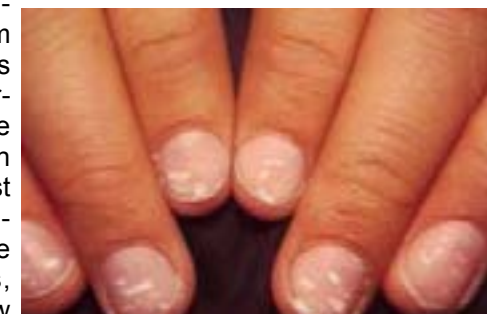
025_01--> (RECORD TO LEARN ABOUT NAIL TEXTURE)

025_02--> DO YOU HAVE COARSE NAILS (BUMPY) AND FINE SKIN?

In some hands the skin texture is fine while the nails tend to coarseness. The coarse nail may be a short, heavy nail, belonging more often to large hands with coarse skin and hard or at least elastic consistency.

025_03--> DOES 1 NAIL OR ALL HAVE FLUTED OR WHITE SPOTS?

The fluting, or ridging, of the nail from the top to the base is an indication of nervous disorder. White spots appearing on the nails are the first warning signs of delicate nerves. As the disorder increases, the white flecks grow larger, then grow together and finally cover the whole nail, taking away transparency and clearness.



025_04--> DO THE NAILS GROW UPON THEMSELVES?

The nail has been bitten down into the quick, the oil dried out, and the filaments, instead of binding themselves together in a homogeneous mass, are piling on top of each other in progression.

025_05--> DO THE NAILS HAVE HORIZONTAL GROOVES?

In reference to an erect fingernail. The nails have horizontal grooves or ridges (dips) that cross the nail horizontally.



- ADD--> 025_05_001--> Horizontal grooves on 1st fingernail only.
- ADD--> 025_05_002--> Horizontal grooves on 2nd fingernail only.
- ADD--> 025_05_003--> Horizontal grooves on 3rd fingernail only.
- ADD--> 025_05_004--> Horizontal grooves on 4th fingernail only.

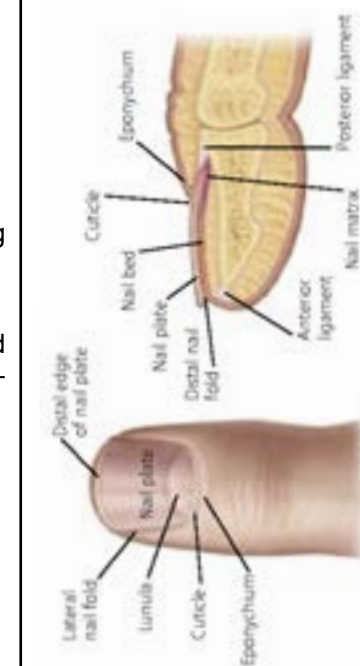
Tips & Notes

Note:

When measuring for nail length. Do not include the extended part of the nail beyond the flesh.

TIP--> 025-01 TO _04

Please record any irregular SEDH Features by doing either a physical, test, answer questionnaires or visual testing. It must be present or obvious to be recorded. When in doubt leave out and continue on.



Nails 025 cont...

ADD--> 025_05_005--> Horizontal grooves on Thumb nail only.

025_06 --> IS THE NAIL NEWLY GROWN?

One nail died and another has grown to replace it.

025_07_A --> IS THE NEW NAIL BADLY FLUTED?

If the new nail is badly fluted, a problem is indicated. It takes approximately six months to grow a new nail. A badly fluted nail has had its vitality interrupted..



025_07_B --> COVID-19 NAILS?

Because of Coronavirus it does affect the fingernails. Select this number if the nails appears as seen here.



Nail LENGTH Begins

NAIL LENGTH BEGINS

Write a TIP: 025-08 TO _13

025_08--> ARE THE NAILS NARROW & LONG?

A narrow nail will be either yellow, blue or pink, never red, and may be found with the blue color at the base, denoting poor circulation. None of these is indicative of disease.



Updated Feb. 25th, 2023

Nails 025 cont...

025_09--> ARE THE NAILS BROAD?

The broad nail is sometimes red in color.



025_10--> ARE THE NAILS SHORT?



025_11--> ARE THE NAILS EXTREMELY SHORT AND FLAT?

This nail has the skin growing down on it.



025_12--> ARE THE NAILS FLAT AND BLUNT, 1/4 INCH IN LENGTH?

Often less than a quarter of an inch long and sometimes broad, covering the entire visible end of the finger and giving the tip an exceedingly flat, blunt appearance, this nail appears almost clubbed. The skin seems to cling to the nail and grow down on it until it can stretch no farther and breaks. This usually results in a ragged appearance where the skin joins the nail. Strong examples of this type are common.



Tips & Notes

025_13--> DO THE NAILS APPEAR OPEN AND FRANK?

These are nails that are broad at the tip, curving around the fingers, broadening at the base, pink in color, and fine in texture. They are a broad, open-looking nail type.



Add--> 025_13_001--> With 005_01 Fine Texture pink in colour

BLUE or Purple Nails Begin

025_14--> ARE THE NAILS BLUE?

Small in size though regular in form, with the end quite square and tapering towards the base, or with the base the same width as the outer end, this nail is often found on long fingers or large hands, though it may be found on small hands. It is quite distinctive in appearance and is easily recognized. The nail is a small one, though it does not have the appearance of a critical nail, nor is it like the narrow nail. A short nail, yet well-proportioned.



025_15--> ARE THE NAILS TINGED WITH A FAINT BLUE?

A deep blue color is often found with this nail, which is most pronounced at the base. Be careful to note the age of females with blue-colored nails. There is some disturbance of circulation at age 12 to 14, at which time childhood is giving way to womanhood. This ceases when menstruation becomes regular. Blueness is also found at change-of-life.



Updated Feb. 25th, 2023

BLUE NAIL BEGINS

Write a TIP: 025-14 TO 15

NAIL TYPE Begins

025_16--> ARE THE NAILS BULBOUS?

The end of the finger thickens on the underside until it forms a distinct bulb or pad, which is sometimes as round as a marble. Over this bulbous tip the nail is curved, creating a complete clubbed, blunt end, the top curved with the nail, the underside fleshy. This formation makes the end of the finger a complete knot; the appearance is most striking.



025_17--> ARE THE NAILS LARGE?

Viewing the fingernail sideways shows a decided inclination to curve. This nail can be found on any-shaped tip — it is the large curve alone that distinguishes it.



025_18--> RECORD IF NAILS ARE CLUBBED?

The nail has an exaggerated upward curve and curls around the fingertip. Could indicate: Lung, Cardiovascular, Liver Inflammatory Bowel Diseases. Maybe HIV Infections



RECORD IF NAILS ARE ARE FLAT?--> 025_18_001 Nails are FLAT?



Tips & Notes

NAIL TYPE BEGINS

When measuring for nail length. Do not include the extended part of the nail beyond the flesh.

TIP--> 025-16 TO _20

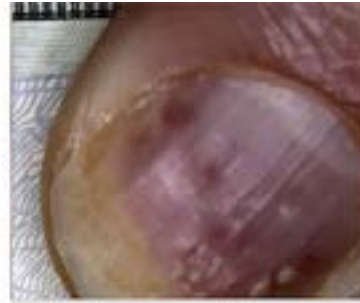
Please record any irregular SEDH Features by doing either a physical, test, answer questions or visual testing. It must be present or obvious to be recorded. When in doubt leave out and continue on.

File ID: EIM_Manual Chptr-2 Pg 077-082 Exam-1 Tutorial 8x11.pdf

Tips & Notes

Nails 025 cont...

ADD--> 025_18_002
 Are the nails thick?



Thick nail plate

ADD--> 025_18_003
 Are the nails thin?

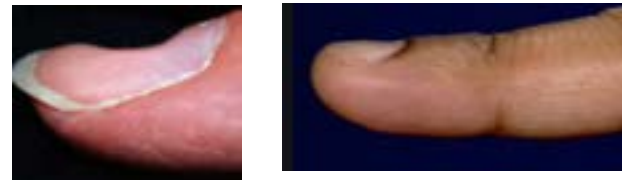
ADD--> 025_18_004 Are the nails smooth?



025_19--> ARE THEY SPOON SHAPE NAILS?

The nail is depressed and appears to be flat or spoon-like. Could indicate Severe Iron Deficiency Anemia, Repeated Exposuer to Cjemicals

ADD-->



025_19_001 Do the nails normal then curves downward at the tip?

025_20--> ARE THE NAILS DEPRESSED AND/OR HAVE BEAU'S LINES ON THEM?

Nails are depressed and can also have horizontal furrows across them. Cpuld indicate Peripheral vascular deisease, Diabetes Zinc Deficiency.



Updated Feb. 25th, 2023

Epigenologist Registration No. _____
 Epigenologist License No. _____

Nails 025 cont...

WHITE Nails Begin

025_21--> ARE THEY NAILS WHITE?

White nails are commonly known as Terry's nail with most of the skin under the nail appears white along with normal pink area reduced to a band near the nail tip.



ADD--> 025_21_001 Are the nails pale white whith no luster?

ADD--> 025_21_001 Are the nail-tips frayed splitting, psoriasis?

025_22--> ARE THE NAILS HALF WHITE AND BROWN?

Known as Lindsay's nails. The half near the nail tip appears pink or brown while the half near the cuticle looks white. Also known as half-and-half nails.



YELLOW Nails Here

025_23--> ARE THE NAILS YELLOW IN APPEARANCE?

The Yellow-rnail syndrome indicates slow growth; the nails become thick and very hard, and appear yellow or yellow-green.



File ID: EIM_Manual Chptr-2 Pg 077-082 Exam-1 Tutorial 8x11.pdf

Epigenologist Registration No. _____
 Epigenologist License No. _____

Tips & Notes

WHITE NAIL COLOR BEGINS
025-21 WHITE NAILS

YELLOW NAIL COLOR BEGINS
025-23 YELLOW NAILS

Tips & Notes

**RED NAIL COLOR
 BEGINS**
 025-24 RED NAILS

**BROWN OR BLACK NAIL
 COLOR BEGINS**
 025-26

**NAIL SHAPES BE-
 GINS**

TIP--> 025-27 TO _34

*When measuring for nail length.
 Do not include the extended
 part of the nail beyond the flesh.*

RED Nails Begin

025_24--> DO THE NAILS LOOK RED, HEMORRAGING?

The nails have longitudinal red streaks (splinters) that may signify bleeding of the capillaries.



...025_24_001 Are the nails brittle ?

025_25--> DO THE NAILS HAVE IRREGULAR PITTING OR PITTING IN ROWS?

The fingernails resemble hammered brass.



BROWN or BLACK Nails Begin

025_26--> DO THE NAILS HAVE BROWN OR BLACK DISCOLORATION?

There may be a single large patch or a collection of small freckles. The thumb and big toes are the most common sites. Such marks may spread from the nail to surrounding finger tissue.



Nail SHAPES Begin

025_27--> ARE THE NAILS SQUARISH STURDY-LOOKING?

In reference to an erect fingernail.



Updated Feb. 25th, 2023

Tips & Notes

ADD--> 025_27_001 Are the nails unusually square and wide?
 See 025_17 large nails

025_28--> DO THE FINGERTIPS AND NAILS HAVE A ROUND TIP?

In reference to an erect fingernail.



025_29--> DO THE NAILS HAVE A ROUND TIP, NARROW AND LONG AT THE BASE?

In reference to an erect fingernail.



025_30--> ARE HALF-MOONS AT THE BASE OF THE NAILS LARGE?

In reference to an erect fingernail. The little white crescent at the base of each fingernail is sometimes known as Nail-arch Shadow, Half-moons or Health circle.



ADD--> 025_30_001--> Is there a Half-moon on the 3rd fingernail of left hand only?

025_31--> DO THE NAILS HAVE VERTICAL STRIATIONS IN THEM?

In reference to an erect fingernail. Fingernails with creases or grooves running lengthwise along the nail body with including a thin weak middle section.



File ID: EIM_Manual Chptr-2 Pg 077-082 Exam-1 Tutorial 8x11.pdf

Tips & Notes

TIP--> 025-34 HALF MOONS

When measuring for nail length. Do not include the extended part of the nail beyond the flesh. Please note and record (025-33) if half moons don't exist.



HAIR 30...

..must be understood before you start your examination. By comparing the hand to the book becomes second nature via repetitious examination. Eventually it won't be necessary to read and / or execute every test.

TIP--> 030_01 TO _07

Please record any irregular SD-Features by doing either a physical, test, answer questionnaires or visual testing. It must be present or obvious to be recorded. When in doubt leave out and continue on.

Nails 025 cont...

025_32--> DO THE NAILS HAVE PINHOLES IN THEM?



025_33--> DO THE NAILS HAVE SPOON-LIKE BULGES?

In reference to looking at the fingernail, sideways.



ADD--> 025_33_001--> Is there a dumbbell shape on the left 3rd fingernail, red-purplish in color?

025_34--> ARE THE HALF-MOONS AT THE NAIL BASE DISAPPEARING?

In reference to an erect fingernail. The little white crescent at the base of each fingernail is sometimes known as Nail-arch Shadow, Half-moons or Health circle.



30 - HAIR



The hair on the hand tells how hardy we are. Hair shows strength. Humans do not usually have hairy bodies unless they belong to a certain type and have certain qualities. Hair on the back of the hands deserves attention, its fineness or coarseness indicating physical vitality.



030_01--> IS THERE NO HAIR ON THE BACK OF THE HANDS?

Most hands will have little hair, especially the hands of women. Hair

Updated Feb. 25th, 2023

Hair 030 cont...

will more often be encountered on men's hands because men are more robust than women, but it is not true that the absence of hair on a man's hand in any way indicates effeminacy.

030_02--> IS THE HAIR BLOND OR LIGHT?

Blond hair belongs to the Swede and Norwegian, particularly when the hair is yellow or straw-colored.

030_03--> IS THE HAIR BLACK?

Black hair belongs to the Latin and Oriental races. They have lots of vital energy and strength. The iron in them is abundant but is not needed to sustain and feed their vital fires.

030_04--> IS THE HAIR WHITE?

White hair is caused by the level of iron falling far below normal so that not enough is absorbed by the hair sacs to give even a blond color. There are isolated cases where the hair has turned white from fright or from many headaches.

030_05--> IS THE HAIR GRAY?

When grey hair is present, look at the skin on the back of the hand to see if it has the wrinkled, satiny-brown color of an old hand. If the skin is aged, merely conclude that this is the cause of the gray color. Also, look at the color of the ends of the hair. If they are black or red and the texture of the skin is youthful, then the hair is not really grey. The hand may be flat and flabby, much rayed and creased.

030_06--> IS THE HAIR RED?

Red hair must be as prominent as the color red. When examining red hair, look for fineness or coarseness. Coarse hair is a sign of great inflammability.

030_07--> IS THE HAIR AUBURN OR BROWN?

What is called auburn hair and is much praised and admired is a combination of the warmth and passion of black hair with a shade of added fire from the red, a combination which tinges the hair with a golden glow.



35 - The HAND AS A WHOLE



The hand as a whole reveals the mind as either being intellectual or driven by simpler instincts. The best method of proceeding with this examination is to lay the two hands wide open before you with the palms up and the fingers straightened out to their natural length. If the hand is a flexible one, do not allow it to bend back, showing its flexibility, but extend the fingers in a natural manner until they are held straight. This gives a full view of the palm. First, note if the fingers are long enough to balance the palm, if they are shorter than the palm, or if they seem to be too long. If you cannot tell at a glance which part predominates, the hand is balanced.

Tips & Notes

035 HAND AS A WHOLE...

..must be understood before you start your examination. By comparing the hand to the book becomes second nature via repetitious examination. Eventually it won't be necessary to read and / or execute every test.

TIP--> 035-01 TO 08

Please record any irregular SD Features by doing either a physical, test, answer questionnaires or visual testing. It must be present or obvious to be recorded. When in doubt leave out and continue on..

Tips & Notes

Start your examination. by comparing the hand to the book becomes second nature via repetitious examination. Eventually it won't be necessary to read and / or execute every test..

TIP--> 035-_03 TO 04, 6, 07 OR 08

If two portions of the hand are the same in length then assume the other portion is out of balance.

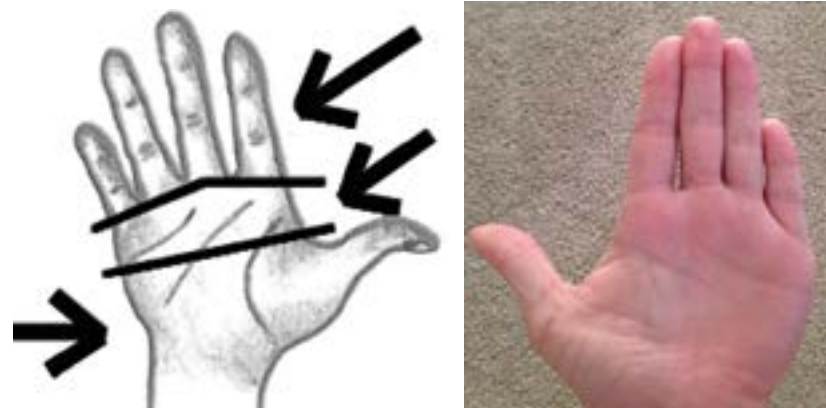
Hand As A Whole 35 cont...

035_01--> ARE THE FINGERS EXCESSIVELY LONG?

Close the fingers over the palm and note how far towards the wrist they reach. The 1st finger will be shortest; the 2nd, even though the longest finger, next; and the 3rd, by virtue of its position, will appear the longest of all. This is because they arrange themselves over the “G” Mount. It is generally believed that the fingers closing in this way should reach the wrist or be as long as the palm, but this is seldom the case because of the prominence of the Mounts. When the fingers extend between a little below the center of the “G” Mount and the creases on the wrist, class the fingers as long.



035_02--> IS THE MIDDLE OF YOUR HAND PROPORTIONATELY LARGER



035_03--> IS THE BASE OF YOUR HAND PROPORTIONATELY LARGER?



Updated Feb. 25th, 2023

Hand As A Whole 35 cont...

035_04--> IS THE HAND BALANCED?



035_05--> IS ONE PART SLIGHTLY SMALLER?

When a hand is not balanced, note which part is the smallest.

035_06--> IS THE BASE SLIGHTLY SMALLER?

035_07--> ARE THE FINGERS SLIGHTLY SMALLER?

035_08--> IS THE MIDDLE PORTION SMALLER?

40 - FINGER Length, Spaces & Phalanges

Fingers tell a lot about character and the chances of success. A series of tests for each finger must be done. Circle the Description numbers you have selected.

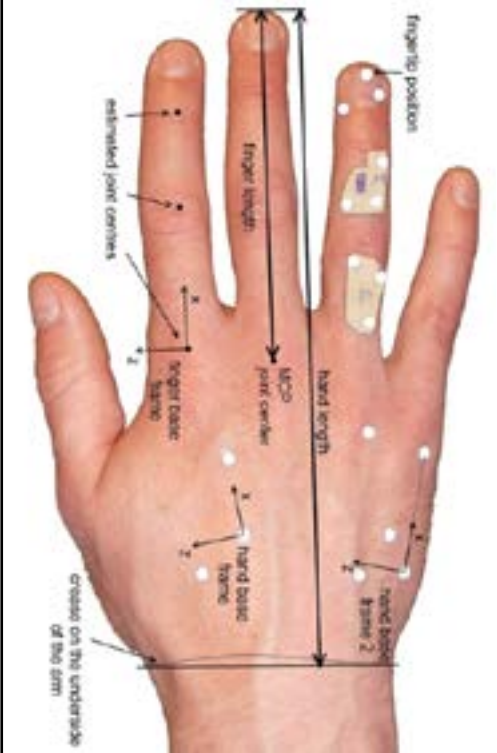
LONG Fingers (Seperately) Begins

040_01--> IS THE 1ST FINGER LONGER OR DOES IT SIT HIGH?

A normal 1st finger will reach the middle of the first Phalange of the 2nd finger. Also, the 1st finger may appear long because of the way it sits on the hand. A finger longer than this is a high 1st finger.



Tips & Notes



040 - FINGER LENGTH, SPACES & PHALANGES...

...must be understood before you start your examination. By comparing the hand to the book becomes second nature via repetitious examination. Eventually it won't be necessary to read and / or execute every test.

TIP--> 040_01 to 28

Please record any irregular SD-Features by doing either a physical, test, answer questionnaires or visual testing. It must be present or obvious to be recorded. When in doubt leave out and continue on..

Tips & Notes

TIP--> 040_01 to 08

Finger length can have two different sources. How the finger sits at the base (knuckle area) and/or the actual length of the finger. If the finger sits high but the length is normal the finger must be considered as being normal. When in doubt leave out and continue on.

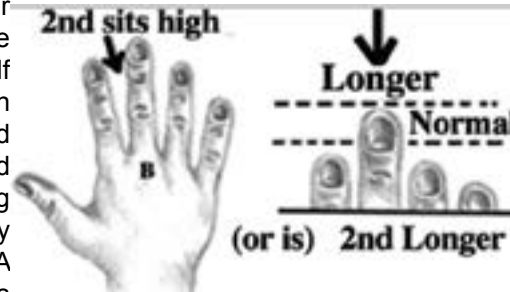


RING AND 1ST FINGER EQUAL LENGTH

Hand As A Whole 35 cont...

040_02--> IS THE 2ND FINGER LONGER OR DOES IT SIT HIGH?

A normal 2nd finger will tower above the others. Only if it is half a Phalange longer than normal is it a long 2nd finger. Also, the 2nd finger may appear long because of the way it sits on the hand. A finger longer than this is a high 2nd finger.



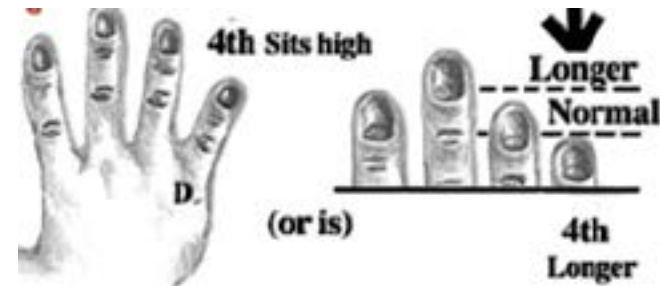
040_03--> IS THE 3RD FINGER LONGER OR DOES IT SIT HIGH?

A normal 3rd finger will reach the middle of the first Phalange of the 2nd finger. A finger longer than this should be classed as a long 3rd finger. Also, the 3rd finger may appear long because of the way it sits on the hand.



040_04--> IS THE 4TH FINGER LONGER OR DOES IT SIT HIGH?

A normal 4th finger should reach the first knot on the 3rd finger. If longer than this, the finger should be classed as a long 4th finger. Usually, the 4th finger appears shorter than the other fingers. Also, the 4th finger may appear long because of the way it sits on the hand.



Updated Feb. 25th, 2023

Finger Length, Spaces & Phalanges 40 cont...

SHORT Fingers Begin

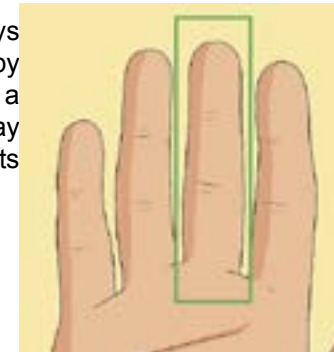
040_05--> IS THE 1ST FINGER SHORTER OR DOES IT SIT LOW?

A normal 1st finger should reach the middle of the first Phalange of the 2nd finger. If it does not, then it is classed as being short. Also, the 1st finger may appear short because of the way it sits on the hand.



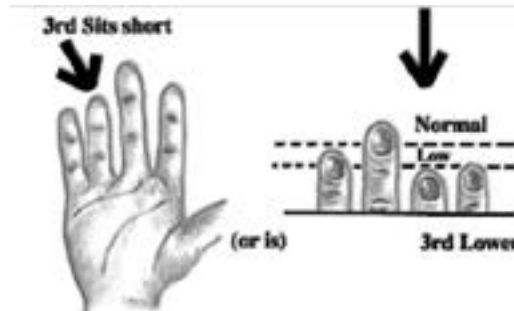
040_06--> IS THE 2ND FINGER SHORTER OR DOES IT SIT LOW?

A normal 2nd finger should always tower above the others, but only by half a Phalange. If not, then it is a short finger. Also, the 2nd finger may appear short because of the way it sits on the hand.



040_07--> IS THE 3RD FINGER SHORTER OR DOES IT SIT LOW?

A normal 3rd finger should reach the middle of the first Phalange of the 2nd finger. Also, the 3rd finger may appear short because of the way it sits on the hand.



Tips & Notes

SHORT FINGERS BEGINS

Finger length can have two different sources. How the finger sits at the base (knuckle area) and/or the actual length of the finger. If the finger sits low but the length is normal the finger must be considered as being normal.

Write a TIP: 040_06 to 08

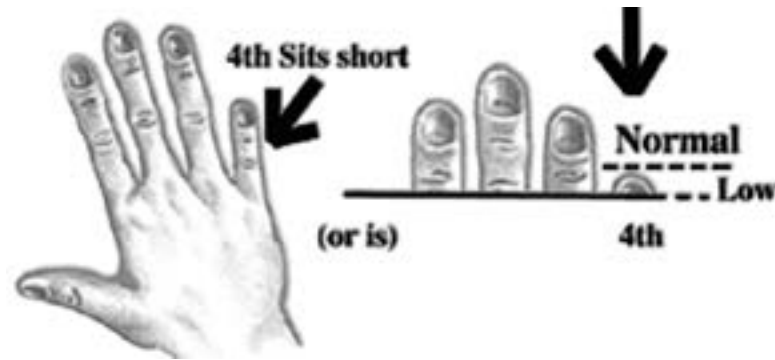
Tips & Notes



Finger Length, Spaces & Phalanges 40 cont...

040_08--> IS THE 4TH FINGER SHORTER OR DOES IT SIT LOW?

A normal 4th finger should reach the first Phalange on the 3rd finger. Also, the 4th finger may appear short because of the way it sits on the hand.



Finger SPACING Begins

CHECK FOR LARGE SPACES BETWEEN THE FINGERS.

It is very important in this examination that the fingers be held naturally. Any strained position could defeat the analysis. Place the hand in a perfectly natural manner on a piece of white paper as though to draw an outline. This should be done several times in succession to space the fingers naturally. Another method is to extend the arm and bend the hand back at the wrist, so as to look at the nails. This shows finger spaces quite accurately.

040_09--> ARE THE FINGER SETTINGS NORMAL?

It is best if the hands have normally placed fingers that are set evenly on the palm.

Human digital formula: 3D > 4D > 2D > 1D > 5D

2D:4D = digit ratio



Updated Feb. 25th, 2023

040 FINGER SPACING BEGINS

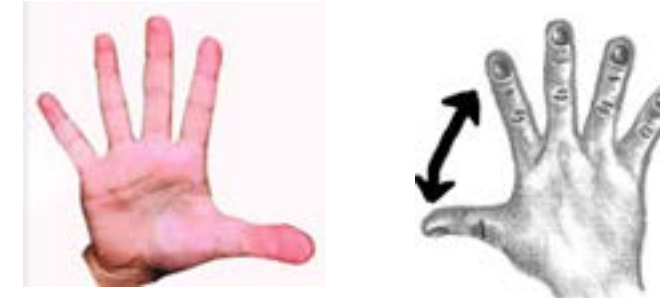
It is very important in this examination that the fingers be held naturally.

Write a TIP: 040_09 to 15

Epigenologist Registration No. _____
Epigenologist License No. _____

Finger Length, Spaces & Phalanges 40 cont...

040_10--> IS THE THUMB AND 1ST FINGER WIDE?



040_11--> IS THE 1ST AND 2ND FINGERS WIDE?



040_12--> IS THE 2ND AND 3RD FINGERS WIDE?

Back of right hand



040_13--> IS THE 3RD AND 4TH FINGERS WIDE?

Back of right hand



File ID: EIM_Manual Chptr-2 Pg 077-082 Exam-1 Tutorial 8x11.pdf

Epigenologist Registration No. _____
Epigenologist License No. _____

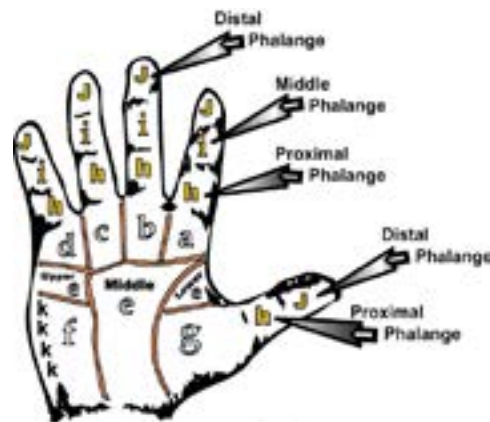
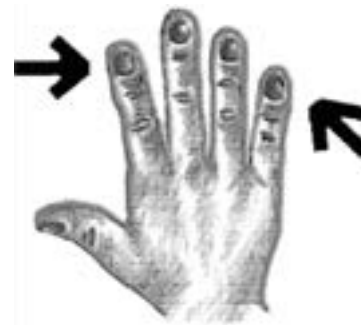
Tips & Notes

Finger Length, Spaces & Phalanges 40 cont...

040_14--> ARE THE FINGERS EQUALLY SEPARATED?



040_15--> ARE THE FINGERS CLOSE TOGETHER AND CANNOT SPREAD WIDE?



040 16 Phalanaes

FINGER PHALANGES

In medical terminology the 1st row of phalanges from the top is called the distal phalanx. 2nd row of phalanges is called the middle phalanx. The 3rd row of phalanges is called the proximal.

TIP--> 040_17 to 19

In medical terminology the 1st row of phalanges from the top is called the distal phalanx.

Finger PHALANGES Begins

040_16--> (RECORD TO LEARN ABOUT THE 3 FINGER PHALANGES)

Fingers are made up of Phalanges, and in this examination we measure the size of the Phalange. From the tip to the first joint is the 1st Phalange. Between the joints is the 2nd Phalange, and the 3rd Phalange is from the 2nd joint to the hand. The three Phalanges will tell you whether mental quickness, business or common instinct rule you. Use a compass to measure Phalanges.

Updated Feb. 25th, 2023

Finger Length, Spaces & Phalanges 40 cont...

1st Finger PHALANGES Begin

040_17--> ARE ALL THE 1ST PHALANGES LONG?

Is the 1st Phalange long on all four fingers? Use the same principle as 040_16.

Palm of right hand



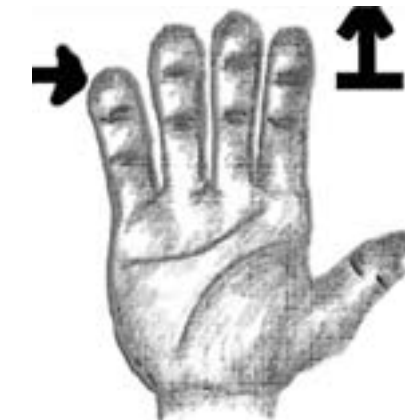
040_18--> ARE ALL THE 1ST PHALANGES THICK AND LONG?

Use the same principle as 40=16.

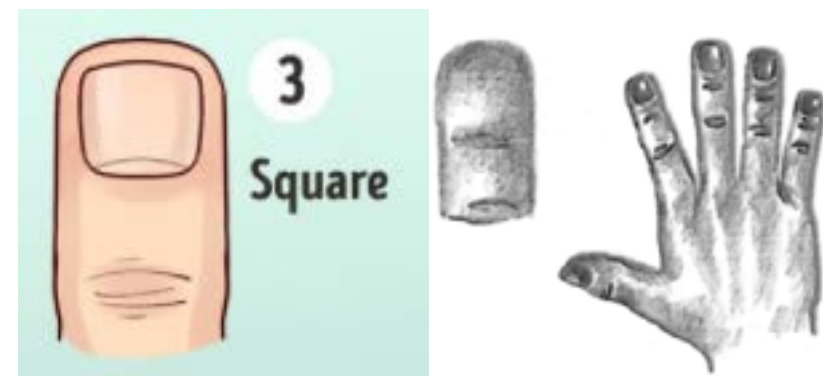
040_19--> ARE ALL THE 1ST PHALANGES SHORT?

Use the same principle as 40=16.

Palm of right hand



040_20--> ARE THE 1ST PHALANGES EXCESSIVELY SQUARE?



TIP--> 040_20

If you have already recorded Description number 25_27 then you might consider recording Decriptive Feature number 40_20

Tips & Notes

TIP--> 040_21 to 33

In medical terminology the 2nd row of phalanges from the top is called the middle phalanx.

Finger Length, Spaces & Phalanges 40 cont...

2nd Finger PHALANGES Begin

040_21--> ARE THE 2ND PHALANGES LONG OR THICK?

Back of right hand



040_22--> ARE ALL THE 2ND PHALANGES SHORT?

Palm of right hand



Updated Feb. 25th, 2023

Finger Length, Spaces & Phalanges 40 cont...

3rd Finger PHALANGES Begin

040_23--> ARE ALL THE 3RD PHALANGES LONG OR THICK?

Palm of right hand



040_24--> ARE ALL THE 3RD PHALANGES NARROW?



Palm of right hand

040_25--> ARE ALL THE 3RD PHALANGES SHORT OR WAIST-LIKE?



File ID: EIM_Manual Chptr-2 Pg 077-082 Exam-1 Tutorial 8x11.pdf

Tips & Notes

TIP--> 040_23 to 25

In medical terminology the 3rd row of phalanges from the top is called the proximal phalanx.

Tips & Notes

TIP--> 040_26 to 28

Supplementary da

TIP--> 040_28

Wide chinks are known as the Rascettes, and can be found under Description number 155.

045 FINGERTIPS...

...must be understood before you start your analysis. Comparing the hand to the book will become second nature via repetitious analyses. Eventually it won't be necessary to read and or execute every test..As you have them on all the fingers it may restrict in some way or the other. The top section is cut could create problems in the mental stimulation part. If the middle section is cut then practical and physical stimulation it would restrict it. If the lower portion is cut into half then it would restrict that particular portion of your life that this particular figure represents. Example first finger has been cut then, administration religion politics and so forth would not be able to use this particular aspect of your life and it might not benefit you.

TIP--> 045_01 to 06

Please record any irregular descriptive features by doing either a physical or visual test. It must be present or obvious to be recorded. When in doubt leave out and continue on.

Finger Length, Spaces & Phalanges 40 cont...

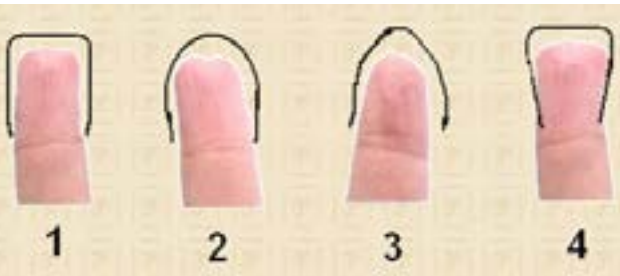
040_26--> ARE THE 1ST PHALANGES SHORT, 2ND NORMAL, 3RD THICK?

040_27--> ARE THE 1ST PHALANGES SHORT, 2ND NORMAL, 3RD MODERATE?

040_28--> ARE THE CHINKS AT THE WRIST WIDE WITH LONG FINGERS? CHINKS ARE THE INDENTATIONS AT THE WRIST.

45 - FINGERTIPS

Fingertips show what kind of a machine people are, whether there is water in the boiler and fire to turn it into steam. They show also whether the machine is acting in its intended fashion. Fingertips can be spatulate, square, conic or pointed and all refer to appearance. You must consider only the shape of the tips of the fingers and not the whole hand.



045_01--> ARE ALL THE TIPS SPATULATE?

The spatulate is the broadest tip, named because of its resemblance to a druggist's spatula.



045_01_000_01
 ...if 010_02 (Soft hands) recorded earlier.

045_02--> ARE ALL THE TIPS SQUARE?

The square tip is distinctly square.

Back of right hand

Updated Feb. 25th, 2023

Finger Length, Spaces & Phalanges 40 cont...

045_03--> ARE ALL VERY SQUARE?



045_04--> ARE THEY ALL A LITTLE CONIC?

ADD
 045_05_000_01

...if 010_02 (Soft hands) recorded earlier.



045_05--> ARE THEY ALL CONIC?

This is found mostly on women's hands, though it is possessed by many men. The tip forms a distinct cone at the end of the fingers and has many degrees of development.

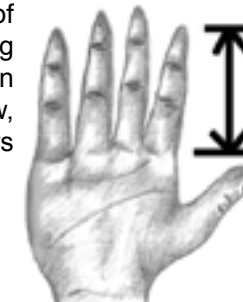
Back of right hand



1ST PHALANGE

045_06--> ARE ALL THE FINGERS POINTED?

Pointed tips are an exaggerated form of the conic. Their appearance is so striking that, once seen, the type is never mistaken for any other. They have a long, narrow, extremely pointed look. The finger narrows from the base to the tip.



Palm of right hand

Supplementary data

045_07--> FINGERTIPS AND THEIR 1ST PHALANGES.

There is a variety of effects which the Phalanges and fingertips

Tips & Notes

TIP--> 045_07

SUPPLEMENTARY DATA

Fingertips 45 cont...

have in conjunction with each other. Look back to see if you have circled the items listed in the following “with” statements. If you have, record the corresponding Genetic Description numbers.

ADD--> 045_07_001--> with 40-17 and 45=5 (1st Phalange long and conic tips)

ADD--> 045_07_002--> with 40-17 and 45=2 (1st Phalange long and square tips)

ADD--> 045_07_002--> with 40-17 and 45=1 (1st Phalange long and spatulate tips)

ADD--> 045_07_004--> with 40-21 and 45=5 (2nd Phalange long and conic tips)

ADD--> 045_07_005--> with 40-21 and 45=2 (2nd Phalange long and square tips)

ADD--> 045_07_006--> with 40-21 and 45=1 (2nd Phalange long and spatulate tips)

ALSO--> 045_07_006+7 with 40-23 and 45=5 (3rd Phalange long and conic tips)

ALSO--> 045_07_008--> with 40-23 and 45=2 (3rd Phalange long and square tips)

ALSO--> 045_07_009--> with 40-23 and 45=1 (3rd Phalange long and spatulate tips)

ADD--> 025_21_001 Are the nails pale white with no luster?

ADD--> 025_21_001 Are the nail-tips frayed splitting, psoriasis.

50 - KNOTTY FINGERS

050 KNOTTY FINGERS...

...must be understood before you start the analysis. Comparing the hand to the book will become second nature via repetitious analyses. Eventually it won't be necessary to read and or execute every test.

TIP--> 050_01 to 03

Please record any irregular descriptive features by doing either a physical or visual test. It must be present or obvious to be recorded. When in doubt leave out and continue on.

Knotty joints or knuckles tell you about qualities of analysis, reasoning, investigation and thoughtfulness. They keep enthusiasm and spontaneity in check. Your fingers will have either smooth or knotty joints. Knotty joints are noticeable at first glance. If you can't tell, do not class your fingers as knotty.

050_01--> ARE ALL THE JOINTS LARGE? Back of right hand



ADD 050_01_000_01
 ...IF 045_01 (Spatulate finger tips) or 045_02 (Square finger tips) recorded earlier.

Updated Feb. 25th, 2023

Knotty Fingers 45 cont...

050_02--> ARE ALL OF THE 1ST JOINTS LARGE?

Back of right hand



050_03--> ARE ALL OF THE 2ND JOINTS LARGE?



55 - SMOOTH FINGERS

Smooth fingers indicate quickness of thought, inspiration, impulsiveness and spontaneity. Many hands have fingers which are distinctly smooth in appearance. These may have any shape of tip. It is only the absence of developed joints which leads you to recognize them.

055_01--> ARE ALL THE FINGERS SMOOTH?



055 SMOOTH FINGERS...

...must be understood before you start your analysis. Comparing the hand to the book will become second nature via repetitious analyses. Eventually it won't be necessary to read and or execute every test.

TIP--> 055_01

Please record only if the fingers appear smooth. You cannot record 055_01 if you have already recorded 045_01.

File ID: EIM_Manual Chptr-2 Pg 077-082 Exam-1 Tutorial 8x11.pdf

Tips & Notes

060 LONG FINGERS... *It must be understood before you start your analysis. Comparing the hand to the book will become second nature via repetitious analyses. Eventually it won't be necessary to read and or execute every test.*

TIP--> 060_01 to 06

Please record any irregular descriptive features by doing either a physical or visual test. It must be present or obvious to be recorded. When in doubt leave out and continue on.

TIP--> 060_01 TO 06

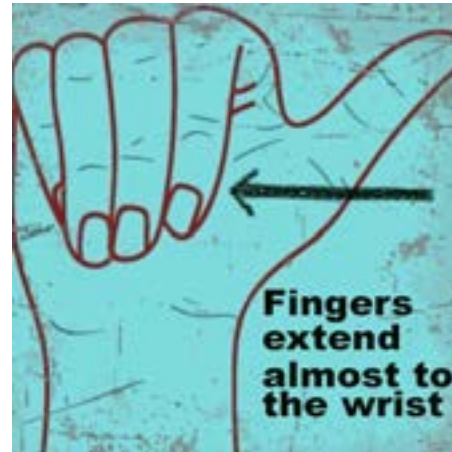


60 - LONG FINGERS



Long fingers reveal an irresistible tendency towards detail, towards observing little and trifling things, and a tinge of suspicion. If the shape of the fingers bears this tendency out it may indicate selfishness and hypocrisy. When looking at your hand, fingers will appear to be long, in balance with the rest of the hand, or decidedly short. This examination requires closing the fingers over the palm and noting how far they reach towards the wrist. The 1st finger will be the shortest, the 2nd and 4th fingers will be even, and the 3rd finger, by virtue of its position, will appear to be the longest of all. This is due to the way the fingers arrange themselves over the Mount under the thumb. When the measurement taken extends anywhere between a little below the center of the thumb Mount and the Rascette at the wrist, class the fingers as long. See long fingers illustration on next page.

060_01--> ARE THE FINGERS LONG?



060_02--> IS THE HAND LONG?

Long hands are those in which both the palm and the fingers are exceedingly long, though the fingers themselves may be only slightly over normal length in proportion to the palm.

Palm of right hand



Updated Feb. 25th, 2023

Long Fingers 60 cont...

060_03--> ARE THE FINGERS LONG AND THIN?

Supplementary data



Finger, Slender

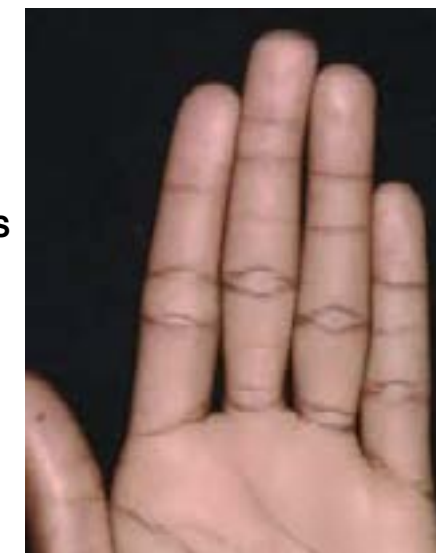
060_04--> ARE THE “C” AND “G” MOUNTS MORE DEFICIENT THAN THE OTHERS?

Go to Description numbers 085_17 and 085_21.



060_05--> IS THE “F” MOUNT LARGER THAN THE OTHERS?
 Go to Description number 085_06.

060_06--> ARE THE FINGERS LONG AND THICK?



Tips & Notes

TIP--> 060_04 TO 05



Tips & Notes

65 - SHORT FINGERS

065_01--> ARE THE FINGERS SHORT

Short fingers reveals how one handles detail, quickness of thought and action. The test for long fingers is also used for short fingers (see Description 60). Short fingers will barely reach the center of the "G" Mount and will appear short in proportion to the rest of the hand. The palm may be long and the fingers short. In this case, they will be far short of the normal line.



Palm of right hand

TIP--> 065 SHORT FINGERS...

...must be understood before you start your analysis. Comparing the hand to the book will become second nature via repetitious analyses. Eventually it won't be necessary to read and or execute every test.

TIP--> 065_01 to 03

Please record any irregular descriptive features by doing either a physical or visual test. It must be present or obvious to be recorded. When in doubt leave out and continue on.

TIP--> 065_012 to 03

SUPPELEMENTARY DATA

Supplementary data

065_02--> A DEEP, WELL-CUT HEAD ISSUES (PALMOGRAPHY), NO DEFECTS.

Description 100_07_006 with short fingers. Use description (065) top of page to test shortness.

065_03--> SMALL HAND AND MULTIPLICITY OF GROOVES IN THE PALM. SEE DESCRIPTION NUMBER 090_01_007



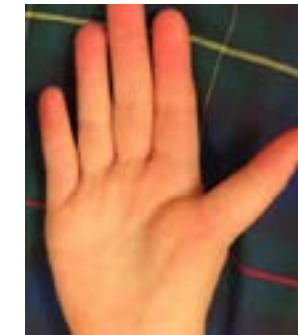
Updated Feb. 25th, 2023

70 - THUMB / Length, Spaces, Phalanges, Tips

The thumb is the fulcrum around which all the fingers must revolve. In proportion to its strength or weakness, it will maintain, enhance or detract from the strength of the other descriptions. The thumb alone can strongly contradict the other descriptions. The thumb cannot be called a finger because it is infinitely more. It is really four fingers because it can oppose the four fingers at will.

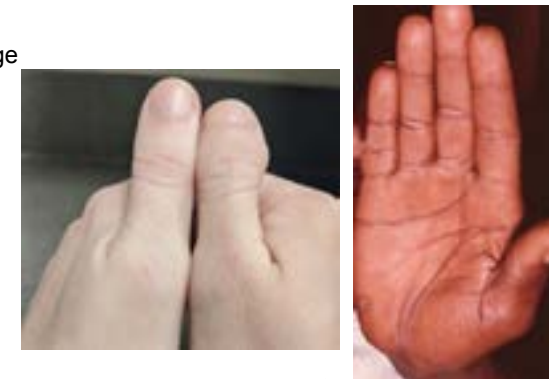
070_01--> IS THE THUMB LARGE COMPARED WITH THE HAND?

Above 3rd Phalange is large



070_02--> IS THE THUMB SMALL COMPARED WITH THE HAND?

Below 3rd Phalange is large



Thumb LENGTH Begins

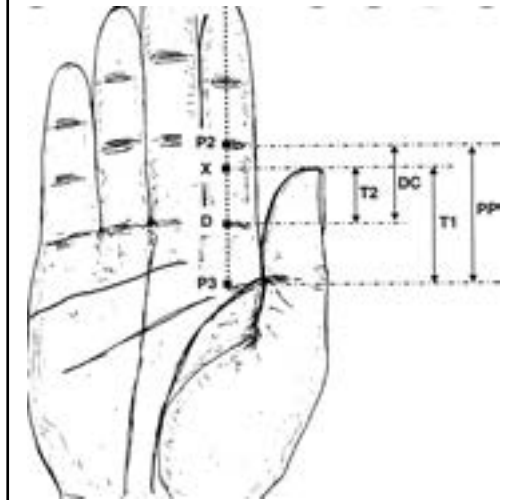
(RECORD 070_03--> TO LEARN ABOUT THUMB PHALANGES)

070_03--> NORMAL THUMB LENGTH.

The thumb is composed of three Phalanges and indicates the amount of moral force anyone has. The tip of the thumb should normally reach the middle of the third Phalange of the 1st finger. If shorter, it could be because of a low setting or, if higher, a high setting. Take care when examining the Phalanges because their long or short length could cause an error in determining the proper setting.



Tips & Notes



TIP--> 070_01 THUMB...

...must be understood before you start your analysis. Comparing the hand to the book will become second nature via repetitious analyses. Eventually it won't be necessary to read and or execute every test.

TIP: 070_01 TO 48

Please record any irregular descriptive features by doing either a physical or visual test. It must be present or obvious to be recorded. When in doubt leave out and continue on.

Tips & Notes

TIP--> 070_03 TO 08
 THUMB LENGTH BEGINS

Thumb / Length, Spaces Phalanged Tips 70 cont...

070_04--> IS THE THUMB SETTING HIGH OR LONGER?

To determine whether the thumb is longer than average or sets high in the hand. First hold the hand up with the palm towards you and the thumb close to the fingers. Second spread the thumb out. The thumb must either exceed the length of the 3rd phalange or set higher up on the hand.



Palm of right hand

070_05--> IS THE THUMB SET LOW?

If the set of the thumb is low it will open wide and will not lie close along the side of the hand easily. This low-set thumb will have a large space between itself and the 1st finger as noted in illustration 70=6. Illustration 70=3 can also be used for comparison. Take care when noting the length of the Phalange of the thumb with illustration 70=5.



Palm of right hand

070_06--> IS THE LOW-SET THUMB GENERALLY LONG?

3rd Phalange of the thumb or the “G” Mount is very close to the wrist.

Palm of right hand



Updated Feb. 25th, 2023

Thumb / Length, Spaces Phalanged Tips 70 cont...

070_07--> IS THE LOW-SET THUMB GENERALLY SHORT?

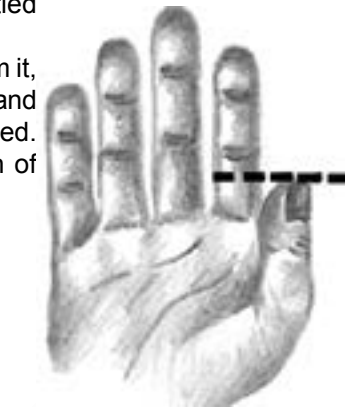
Palm of right hand



070_08--> IS THE THUMB MEDIUM-SET?

Neither too high nor too low, not tied closely to the hand and not lying away from it, the medium-set thumb seems to stand upright. Illustration 70=3 can be used. Take care when noting the length of the Phalanges.

Palm of right hand



Thumb SHAPES Begin

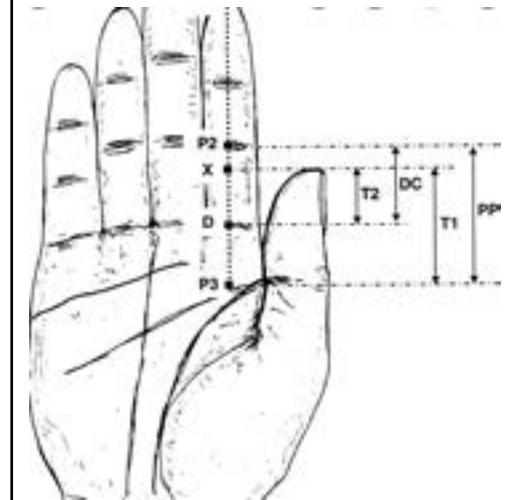
070_09--> Is the thumb straight? (Do not record if you have ALREADY SELECTED 070_08.)

A straight-set thumb is set close to the hand, placed high, low or normally, and has, as its distinctive features, the closeness with which it lies by the side of the hand, the straightness of its carriage, and its lack of flexibility at the joint. (This is not a stiff thumb because the joint is not always stiff, although the joint is not flexible or supple. The marked peculiarity of this thumb is its carriage, as a whole, and its disposition to lie close to the side of the hand.)

070_10--> SUPPLEMENTARY DATA (record to learn about the thumb shapes)



Tips & Notes



TIP--> 070_09 TO 14; 31 TO 34 AND 045 TO 048

THUMB SHAPES BEGINS

TIP--> 070_10

RECORD TO LEARN ABOUT THUMB SHAPES

Thumb / Length, Spaces Phalanged Tips 70 cont...

070_11--> IS THE THUMB HEAVY AND ELEMENTARY?

This thumb is shaped rather like a banana. The two joints do not show where they separate.

Palm of right hand



070_12--> IS THE THUMB FLAT?

Some thumbs are seemingly quite flat, looking as though they have been pressed until the substance has gone out of them. It is this flatness that is their distinguishing feature.

Back of right hand



070_13--> IS THE THUMB BROAD?

When viewed from the nail side, it has a broad look in both Phalanges and has a strong, healthy appearance.

Back of right thumb



070_14--> IS THE THUMB ONE THICKNESS?

This thumb appears to be one thickness throughout its entire length. It is delicate and shapely. The nail is smooth in texture (no ridges on nail) and pink in color.

Back of right thumb



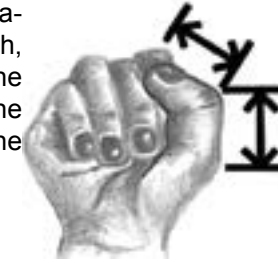
Updated Feb. 25th, 2023

Thumb / Length, Spaces Phalanged Tips 70 cont...

Thumb PHALANGES Begin

070_15--> (RECORD TO LEARN ABOUT THUMB PHALANGES)

These two Phalanges are for will and reason. Examine the Phalanges as to length, shape of tips and form. The rule is that the first Phalange should be shorter than the second. The first Phalange is for will; the second is for reason or logic.



070_16--> (RECORD TO LEARN ABOUT 1ST THUMB PHALANGE)

070_17--> IS THE 1ST PHALANGE LONG?

In a normally shaped hand, the ratio between the first and second Phalange is two to three. In other words, if you measure a thumb from its tip to the middle of the knuckle, the first Phalange must extend over two-fifths of the total length and the second Phalange should extend over three-fifths. Use Illustration 70=15 to measure your Phalanges.

Palm of right hand



070_18--> IS THE 1ST THUMB PHALANGE VERY SHORT?

Use Description 70=15 to measure. Also the thumb should be at the same level as the 1st finger extension from the hand, if the 1st thumb Phalange is very short.



Finger, Short Distal Phalanx of

File ID: EIM_Manual Chptr-2 Pg 077-082 Exam-1 Tutorial 8x11.pdf

TIP--> 070_15 TO 23

THUMB PHALANGES BEGINS

Tips & Notes

TIP--> 070_19 TO 23; 36 TO 44

2ND THUMB PHALANGE BEGINS

Thumb / Length, Spaces Phalanged Tips 70 cont...

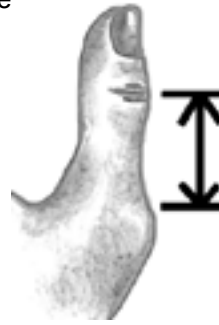
2nd Thumb PHALANGE Begins... LONG

070_19--> (RECORD TO LEARN ABOUT LONG 2ND THUMB PHALANGE)

070_20--> IS THE 2ND THUMB PHALANGE LONG?

Use Illustration 70=15 & 70=37 to measure Phalanges.

Right hand thumb

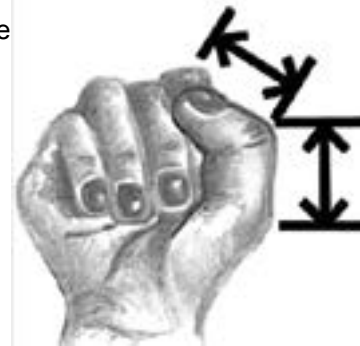


070_21--> IS THE 2ND PHALANGE LONG, THE 1ST SHORT?



070_22--> ARE BOTH THUMB PHALANGES THE SAME LENGTH?

Use Illustration 70=15 to measure the Phalanges.



Updated Feb. 25th, 2023

Epigenologist Registration No. _____
 Epigenologist License No. _____

Thumb / Length, Spaces Phalanged Tips 70 cont...

070_23--> IS THE 3RD THUMB PHALANGE LARGE?

The 3rd thumb Phalange is actually the “G” Mount, 085_07.



THUMB TIPS Begin

070_24--> (RECORD TO LEARN ABOUT THUMB TIPS)

Thumb tips can increase or diminish one’s character. The tip of the thumb follows the same formation as the tips of the fingers. Several other shapes of the first Phalange, which are often seen and yet which cannot be classed as belonging strictly to any of the basic shapes (paddle-shaped and clubbed thumb, Illustrations 70=33 or 70=34), must be considered.

070_25--> IS THE THUMB TIP CONIC? YOU CAN EXAMINE 045_05 CONIC FINGERTIPS DIAGRAM FOR CLARITY.

070_26--> RECORD IF YOU HAVE NOT SELECTED 045_05 (CONIC FINGERTIPS) OR 045_06 (POINTED FINGERTIPS).



File ID: EIM_Manual Chptr-2 Pg 077-082 Exam-1 Tutorial 8x11.pdf

Epigenologist Registration No. _____
 Epigenologist License No. _____

Tips & Notes

TIP--> 70_24 TO 29

THUMB TIPS BEGIN

Tips & Notes

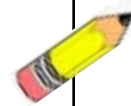
Thumb / Length, Spaces Phalanged Tips 70 cont...

070_27--> IS THE THUMB TIP SQUARE?

Right hand thumb



070_28--> RECORD IF YOU HAVE ALREADY SELECTED 070_27 BUT NOT 045_02.



070_29--> IS THE THUMB TIP SPATULATE?

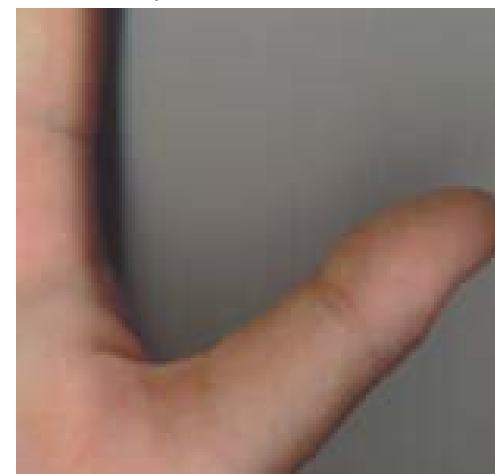
Description 045_01 (Spatulate fingertips) also shows a good description of a spatulate tip.

070_30--> RECORD IF YOU HAVE ALREADY SELECTED 070_29 BUT NOT 045_01.



070_31--> IS THE 1ST PHALANGE NORMAL?

Use Description 070_15 for Description details.



Updated Feb. 25th, 2023

Epigenologist Registration No. _____
 Epigenologist License No. _____

Thumb / Length, Spaces Phalanged Tips 70 cont...

070_32--> DOES THE THUMB LOOK VERY PUNY?



070_33--> IS THE THUMB TIP PADDLE-SHAPED?

Many thumbs have a broad 1st Phalange, as viewed from the nail side, but are not thick all the way through. This is not the flat thumb, for it is not thin enough, and is not as thick as the clubbed thumb. It is its extreme breadth, often called paddle-shaped, that is its distinguishing feature, and this breadth belongs to a long Phalange; thus it has both length and breadth but not thickness. It is always a strong Phalange and must be analyzed as such, even if its length is somewhat deficient.



070_34--> IS THE THUMB CLUBBED?

Occasionally, a thumb may have a 1st Phalange that is thick and rounded, or broad and thick, with a nail that is short and very coarse in texture. This is not the consumptive formation of nail and tip but is found on the hands of healthy people. The clubbed thumb requires careful study.

Right hand thumb



File ID: EIM_Manual Chptr-2 Pg 077-082 Exam-1 Tutorial 8x11.pdf

Epigenologist Registration No. _____
 Epigenologist License No. _____

Tips & Notes

TIP--> 70_31 TO 34 AND 45 TO 48

THUMB SHAPES CONTINUES...

Tips & Notes

TIP--> 070_35

THUMB JOINT BEGINS

TIP--> 070_36 TO 44

2ND THUMB PHALANGE CON-
 TINUES

Thumb / Length, Spaces Phalanged Tips 70 cont...

Thumb JOINT Begins



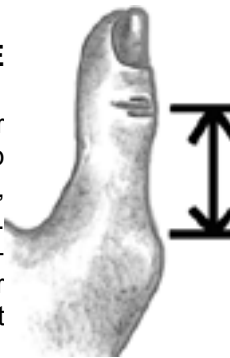
070_35--> IS THE THUMB JOINT LARGE?

2nd SHORT Thumb Phalanges Cont...

070_36--> (RECORD TO LEARN ABOUT SHORT 2ND THUMB PHALANGE)

070_37--> IS THE 2ND THUMB PHALANGE LONG? SELECT 070_20 & _37

When examining the 2nd Phalange, consider its length by reading 070_15. Hold the thumb up and compare it to the rest of the hand. Next, bend the thumb as shown in the illustration. Accustom yourself to noting whether this Phalange is in proportion to the hand and whether it is longer or shorter than the 1st Phalange. It should normally be a little longer. and select



070_38--> IS THE 2ND THUMB PHALANGE SHORT?

070_39--> IS THE 2ND THUMB PHALANGE SHORT AND THICK?



070_40--> IS THE 2ND THUMB PHALANGE EXCEEDINGL SHORT?



Updated Feb. 25th, 2023

Tips & Notes

TIP--> 070_45 TO 48

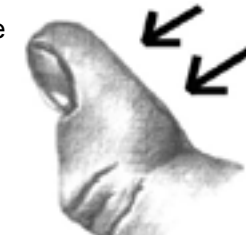
THUMB SHAPES CONT...

Thumb / Length, Spaces Phalanged Tips 70 cont...

070_41--> IS THE 2ND THUMB PHALANGE FLAT AND FLABBY LIKE THE 1ST PHALANGE?

If the thumb tip is flat, assume the 2nd Phalange to be flabby, even if slender and round.

Back of right hand thumb



Supplementary data

070_42--> (RECORD IF IS A NEGATIVE ATTITUDE TOWARDS LIFE).

070_43--> (RECORD IF THERE IS A POSITIVE ATTITUDE TOWARDS LIFE.)



070_44--> IS THE 2ND THUMB PHALANGE WAIST-LIKE?

Back of right hand thumb

070_45--> (RECORD TO LEARN ABOUT THE SHAPES OF THE THUMB).

070_46--> IS THE THUMB PHALANGE MERELY BROAD?

070_47--> IS THE THUMB SUPPLE?

The supple thumb can bend back at the joint, as does the low-set thumb.



File ID: EIM_Manual Chptr-2 Pg 077-082 Exam-1 Tutorial 8x11.pdf

Tips & Notes

TIP--> 075 FINGER STANCE...

...must be understood before you start your analysis. Comparing the hand to the book will become second nature via repetitious analyses. Eventually it won't be necessary to read and or execute every test.

TIP--> 075_01 TO 20

Please record any irregular descriptive features by doing either a physical or visual test. It must be present or obvious to be recorded. When in doubt leave out and continue on.

Thumb / Length, Spaces Phalanged Tips 70 cont...

070_48--> IS THE THUMB STIFF?

This thumb is stiff in the joint and does not bend back as does the supple thumb. It tries to carry itself erect and close to the hand. The joint must be used as a guide in determining the stiff thumb.



75 - FINGER STANCE

Every finger leaning towards another gives up some of its strength to the finger towards which it leans. This shows if your character is balanced or not. Please note: whether any finger stands more erect than the others, with one or more fingers inclined towards it. A leaning finger and a bent finger are not the same.

075_01--> IS THE 1ST FINGER ERECT OR STRAIGHT?



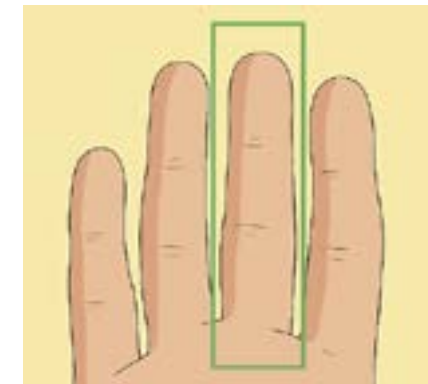
Updated Feb. 25th, 2023

Finger Stance 75 cont...

075_02--> DOES THE 1ST FINGER LEAN TO THE 2ND FINGER?



075_03--> IS THE 2ND FINGER ERECT OR STRAIGHT?



075_04--> DOES THE 2ND FINGER LEAN TO THE 1ST FINGER?



Tips & Notes

Tips & Notes

Finger Stance 75 cont...

075_05--> DOES THE 2ND FINGER LEAN TO THE 3RD FINGER?



075_06--> IS THE 3RD FINGER ERECT OR STRAIGHT?



075_07--> DOES THE 3RD FINGER LEAN TO THE 2ND FINGER?



Updated Feb. 25th, 2023

Finger Stance 75 cont...

075_08--> DOES THE 3RD FINGER LEAN TO THE 4TH FINGER?



075_09--> IS THE 4TH FINGER ERECT OR STRAIGHT?

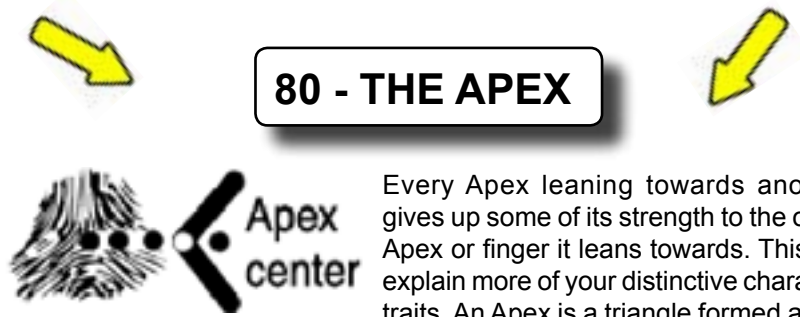


075_10--> DOES THE 4TH FINGER LEAN TO THE 3RD FINGER?



Tips & Notes

NOTE: To find the centre of any mount under the fingers they are the opposite side of the knuckles on the back of the hands. For example place your index finger on the knuckle and the thumb in the palm (opposite the knuckles) defines the centre of the mounts under the Fingers.



80 - THE APEX

Every Apex leaning towards another gives up some of its strength to the other Apex or finger it leans towards. This will explain more of your distinctive character traits. An Apex is a triangle formed at the base of each finger. The center of the triangle is the center of the Apex and Mount. The center will show whether the Apex is leaning or not. Note where the center of the Apex is as you answer the following questions. You will need a magnifying glass to view the Apex and dot the center with a pen. If in doubt leave out.

triangle is the center of the Apex and Mount. The center will show whether the Apex is leaning or not. Note where the center of the Apex is as you answer the following questions. You will need a magnifying glass to view the Apex and dot the center with a pen. If in doubt leave out.

PLEASE NOTE:

If the center of the Apex leans left or right and points upwards, then record both Description numbers.

TIP--> 080_01 HOW TO CENTRE OF APEX THAT DEFINE MOUNTS...



...must be understood that the centre of the apex under each Finger. Defines the low and highs of each mounts or pads under each finger.

TIP--> 080_01 TO 23

Please record any irregular descriptive features by doing either a physical or visual test. It must be present or obvious to be recorded. When in doubt leave out and continue on.

APEX under 1st finger on "A" Mount

- 080_01--> IS THE 1ST APEX CENTERED ON THE "A" MOUNT UNDER THE 1ST FINGER?
- 080_02--> IS THE 1ST APEX LEANING OUTWARDS TOWARDS THUMB?
- 080_03--> IS THE 1ST APEX LEANING TOWARDS THE 2ND FINGER?
- 080_04--> IS THE 1ST APEX LEANING UPWARDS?
- 080_05--> IS THE 1ST APEX LEANING DOWNWARDS?
- 080_06--> IS THE 1ST APEX CLOSER TO THE HEART CREASE?
- 080_07--> IS THE 1ST APEX CLOSER TO THE HEAD CREASE?

APEX under 2nd finger on "B" Mount

- 080_08--> IS THE 2ND APEX CENTERED ON THE "B" MOUNT UNDER THE 2ND FINGER?
- 080_09--> IS THE 2ND APEX LEANING TOWARDS THE 1ST FINGER?
- 080_10--> IS THE 2ND APEX LEANING TOWARDS THE 3RD FINGER?
- 080_11--> IS THE 2ND APEX LEANING UPWARDS?
- 080_12--> IS THE 2ND APEX LEANING DOWNWARDS?

Updated Feb. 25th, 2023

APEX 080 cont...

APEX under 3rd finger on "C" Mount

- 080_13--> IS THE 3RD APEX CENTERED ON THE "C" MOUNT UNDER
- 080_14--> IS THE 3RD APEX LEANING TOWARDS THE 2ND FINGER?
- 080_15--> IS THE 3RD APEX LEANING TOWARDS 4TH FINGER?
- 080_16--> IS THE 3RD APEX LEANING UPWARDS?
- 080_17--> IS THE 3RD APEX LEANING DOWNWARDS?

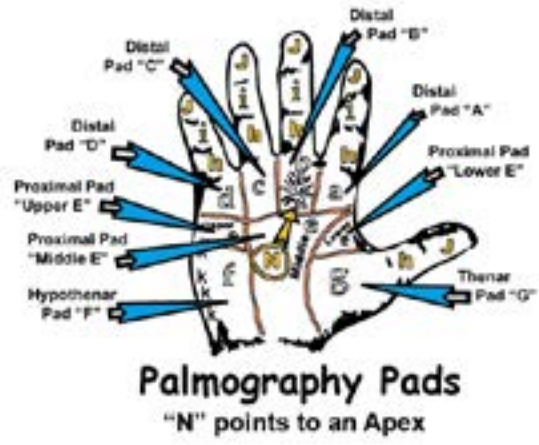
APEX under 4th finger on "D" Mount

- 080_18--> IS THE 4TH APEX CENTERED ON THE "D" MOUNT UNDER THE 4TH FINGER?
- 080_19--> IS THE 4TH APEX LEANING TOWARDS THE 3RD FINGER?
- 080_20--> IS THE 4TH APEX LEANING OUTWARDS?
- 080_21--> IS THE 4TH APEX LEANING UPWARDS?
- 080_22--> IS THE 3RD APEX LEANING DOWNWARDS?
- 080_23--> IS THE 4TH APEX CENTERED, DO THE 1ST, 2ND AND 3RD APEXES LEAN TOWARDS THE 4TH?

File ID: EIM_Manual Chptr-2 Pg 077-082 Exam-1 Tutorial 8x11.pdf

85 - THE 7 MOUNTS

Study of the Mounts helps considerably in determining the strongest character points. The center of the Apex marks the center of the A, B, C and D Mounts only. (See Description number 80 for details). It is necessary to become familiar with exact positions and boundaries of each Mount. Use the



Palmography Pads
"N" points to an Apex

085_01 to 04: To find the centre of any mount under the fingers they are the opposite side of the knuckles on the back of the hands. For example place your index finger on the knuckle and the thumb in the palm (opposite the nuckles) defines the centre of the mounts under the Fingers.

TIP--> 085 THE SEVEN MOUNTS...

...must be understood before you start your analysis. Comparing the hand to the book will become sec

Tips & Notes

ond nature via repetitious analyses. Eventually it won't be necessary to read and or execute every test.

TIP--> 085_01 TO 21

Please record any irregular descriptive features by doing either a physical or visual test. It must be present or obvious to be recorded. When in doubt leave out and continue on.

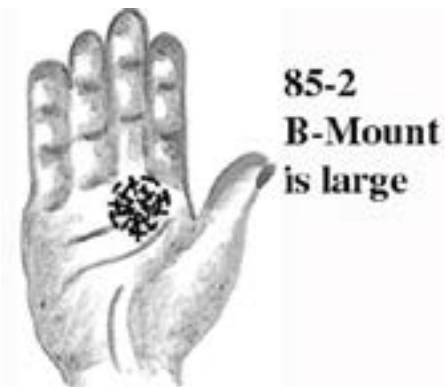
Use the Apex (080) to locate “A”, “B”, “C” and “D” Mounts or pads under the 1st, 2nd, 3rd and 4th fingers. Physiologically, Mounts are the balls or pads of flesh which bulge from the palm at different areas in the hands. In some cases there are holes or depressions. Mounts which are very prominent (in excess) are considered strong Mounts. Flat Mounts are ordinary, and depressions show weakness.

Large Mounts begin

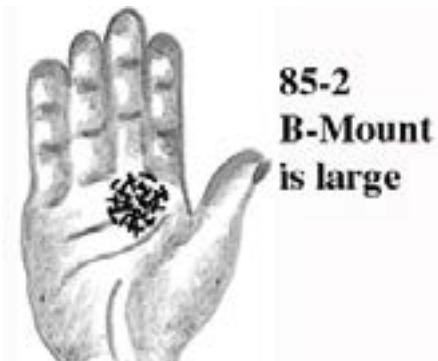
085_01--> “A” MOUNT IS LARGE.



085_02--> “B” MOUNT IS LARGE.



085_03--> “C” MOUNT IS LARGE.

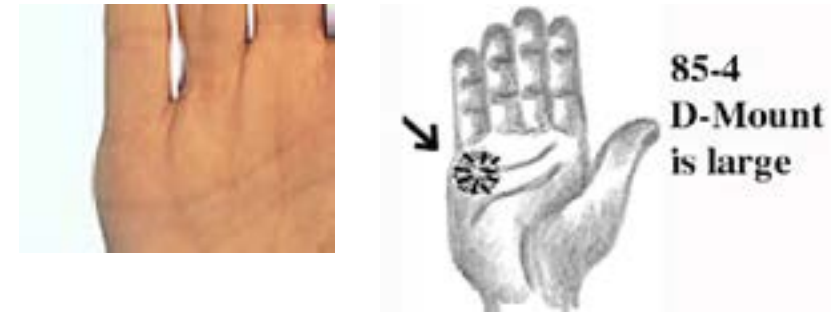


Updated Feb. 25th, 2023

Epigenologist Registration No. _____
 Epigenologist License No. _____

Tips & Notes

085_04--> “D” MOUNT IS LARGE.



085_05--> Lower “E” Mount is Large



085_06--> “F” MOUNT IS LARGE.



File ID: EIM_Manual Chptr-2 Pg 077-082 Exam-1 Tutorial 8x11.pdf

Epigenologist Registration No. _____
 Epigenologist License No. _____

Tips & Notes

085_07--> “G” MOUNT IS LARGE.



Smooth Mounts begin

Are there any smooth Mounts (no bulges)?

- 085_08--> “A” MOUNT IS SMOOTH OR ORDINARY.
- 085_09--> “B” MOUNT IS SMOOTH OR ORDINARY.
- 085_10--> “C” MOUNT IS SMOOTH OR ORDINARY.
- 085_11--> “D” MOUNT IS SMOOTH OR ORDINARY.
- 085_12--> “E” MOUNTS ARE SMOOTH OR ORDINARY.
- 085_13--> “F” MOUNT IS SMOOTH OR ORDINARY.
- 085_14--> “G” MOUNT SMOOTH OR ORDINARY.

Depressed Mounts begin

Are there any Mounts showing depressions?

- 085_15--> “A” MOUNT IS DEPRESSED.
- 085_16--> “B” MOUNT IS DEPRESSED.
- 085_17--> “C” MOUNT IS DEPRESSED.
- 085_18--> “D” MOUNT IS DEPRESSED.

Updated Feb. 25th, 2023

Tips & Notes

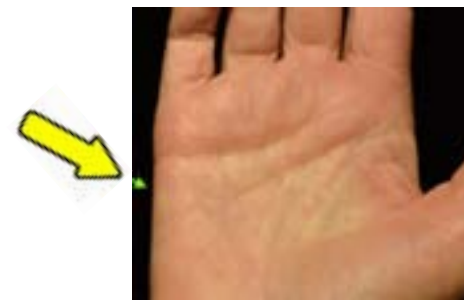
085_19--> “E” MOUNTS ARE DEPRESSED.



085_20--> “F” MOUNT IS DEPRESSED.



085_21--> “G” MOUNT IS DEPRESSED.



87 - MARKS on MOUNTS

Locate any of the following **Dermatoglyphic Descriptive Feature Indentations (DDF-Indentations)** or marks on a particular **Palmography Mount** or **Pads** recording their corresponding number on a particular Mount.

Vertical Grooves begins



File ID: EIM_Manual_Chptr-2 Pg 077-082 Exam-1 Tutorial 8x11.pdf

TIP--> 087 MARKS ON MOUNTS...

...must be understood before you start your analysis. Comparing the hand to the book will become second nature via repetitious analyses. Eventually it won't be necessary to read and or execute every test. Some of the interpretations usually conflict with other Description interpretations. The reason is that the ordinary or depressed Mounts Genetically show these characteres are not strong enough to make and

Tips & Notes

impact from these marks but still exist in some personalty traits.

TIP--> 87_01 TO 91

Please record any irregular **DDIF-Indentations** by doing visual test. It must be present or obvious to be recorded. When in doubt leave out and continue on.

TIP--> 087_01 VERTICAL DDF-INDENTATION

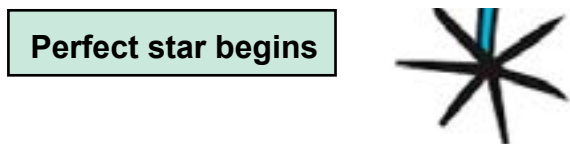
...on any Mount must be in a vertical position in comparison with the the fingers. The angle can be no more then 45 degrees. They are usually made up of independent **DDIF-Indentations** and cannot be a part of a major **DDIF-Indentations** or splits that branch off from them. For example, Head, Heart Life Career **DDIF-Indentations** etc.

Marks on Mounts 087 cont...

- 087_01--> “A” MOUNT - HAS A VERTICAL DDFI ON IT?
- 087_02--> “B” MOUNT - HAS A VERTICAL DDFI ON IT?
- 087_03--> “C” MOUNT - HAS A VERTICAL DDFI ON IT?
- 087_04--> “D” MOUNT - HAS A VERTICAL DDFI ON IT?
- 087_05--> “E” MOUNT - HAS A VERTICAL DDFI ON ANY OF THEM?
- 087_06--> “F” MOUNT - HAS A VERTICAL DDFI ON IT?
- 087_07--> “G” MOUNT - HAS A VERTICAL DDFI ON IT?



- 087_08--> “A” MOUNT - HAS A TRIDENT ON IT?
- 087_09--> “B” MOUNT - HAS A TRIDENT ON IT?
- 087_10--> “C” MOUNT - HAS A TRIDENT ON IT?
- 087_11--> “D” MOUNT - HAS A TRIDENT ON IT?
- 087_12--> “E” MOUNT - HAS A TRIDENT ON ANY OF THEM?
- 087_13--> “F” MOUNT - HAS A TRIDENT ON IT?
- 087_14--> “G” MOUNT - HAS A TRIDENT ON IT?



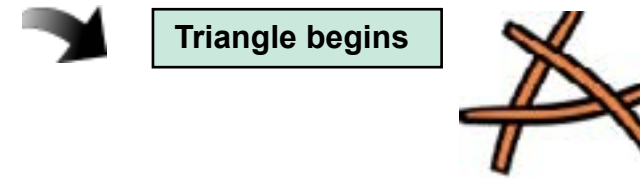
- 087_15--> “A” MOUNT - HAS A PERFECT STAR ON IT?
- 087_16--> “B” MOUNT - HAS A PERFECT STAR ON IT?
- 087_17--> “C” MOUNT - HAS A PERFECT STAR ON IT?
- 087_18--> “D” MOUNT - HAS A PERFECT STAR ON IT?
- 087_19--> “E” MOUNT - HAS A PERFECT STAR ON ANY OF THEM?
- 087_20--> “F” MOUNT - HAS A PERFECT STAR ON IT?

Updated Feb. 25th, 2023

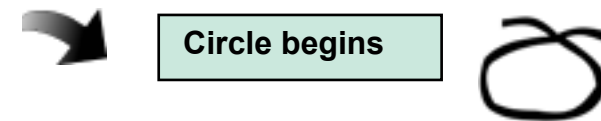
Epigenologist Registration No. _____
 Epigenologist License No. _____

Marks on Mounts 087 cont...

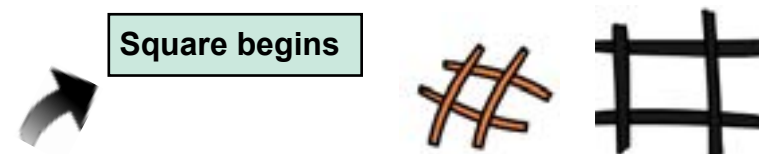
- 087_21--> “G” MOUNT - HAS A PERFECT STAR ON IT?



- 087_22--> “A” MOUNT - HAS A TRIANGLE ON IT?
- 087_23--> “B” MOUNT - HAS A TRIANGLE ON IT?
- 087_24--> “C” MOUNT - HAS A TRIANGLE ON IT?
- 087_25--> “D” MOUNT - HAS A TRIANGLE ON IT?
- 087_26--> “E” MOUNT - HAS A TRIANGLE ON ANY OF THEM?
- 087_27--> “F” MOUNT - HAS A TRIANGLE ON IT?
- 087_28--> “G” MOUNT - HAS A TRIANGLE ON IT?



- 087_29--> “A” MOUNT - HAS A CIRCLE ON IT?
- 087_30--> “B” MOUNT - HAS A CIRCLE ON IT?
- 087_31--> “C” MOUNT - HAS A CIRCLE ON IT?
- 087_32--> “D” MOUNT - HAS A CIRCLE ON IT?
- 087_33--> “E” MOUNT - HAS A CIRCLE ON ANY OF THEM?
- 087_34--> “F” MOUNT - HAS A CIRCLE ON IT?
- 087_35--> “G” MOUNT - HAS A CIRCLE ON IT?



- 087_36--> “A” MOUNT - IS THERE A SQUARE ON IT?
- 087_37--> “B” MOUNT - IS THERE A SQUARE ON IT?
- 087_38--> “C” MOUNT - IS THERE A SQUARE ON IT?
- 087_39--> “D” MOUNT - IS THERE A SQUARE ON IT?

File ID: EIM_Manual Chptr-2 Pg 077-082 Exam-1 Tutorial 8x11.pdf

Epigenologist Registration No. _____
 Epigenologist License No. _____

Tips & Notes

TIP--> 087_22 TRIANGLES

...on any Mount are usually made up of independent creases crossing in all directions. They cannot be a part of a major **DDIF-Indentations** or splits that branch off from them. For example, Head, Heart Life Work Ethics issue's **DDIF-Indentations** etc.

TIP--> 087_29 CIRCLES

...on any Mount can be perfect or made up from a single twisted **DDIF-Indentations**..

TIP--> 087_36 SQUARE

...on the “F” Mount are usually very noticable but be careful as these marks must be prominent and well formed. They are usually made up of independent **DDIF-Indentations** crossing in all directions. They cannot be a part of a major **DDIF-Indentations** or splits that branch off from them. For example, Head, Heart Life issue'ss **DDIF-Indentations** etc.

Tips & Notes

TIP--> 087_43 PERFECT CROSS

...on any Mount are usually very noticable but be careful as these marks must be prominent and well formed. These marks are usually made up of independent **DDIF-Indentations** crossing in all directions. They cannot be a part of a major **DDIF-Indentations** or splits that branch off from them. For example, Head, Heart Life Work Ethics **DDIF-Indentations**, etc.

TIP--> 087_50 GRILLES...

...on the “F” Mount are usually very noticable but be careful as these marks must be prominent and well formed. They are usually made up of independent **DDIF-Indentations** crossing in all directions. They cannot be a part of a major **DDIF-Indentations** or splits that branch off from them. For example, Head, Heart Life Work Ethics etc.

TIP--> 087_57 CROSSBAR

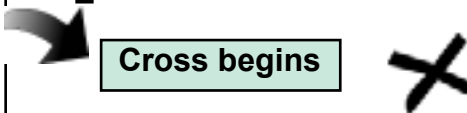
....on any Mount must be in a horizontal position in comparison with the the fingers. The angle can be no more then 45 degrees. They are usually made up of independent **DDIF-Indentations** and cannot be a part of a major **DDIF-Indentations** or splits that branch off from them. For example, Head, Heart Life Work Ethics **DDIF-Indentations** etc.

Marks on Mounts 087 cont...

087_40--> “E” MOUNT - HAS A SQUARE ON ANY OF THEM?

087_41--> “F” MOUNT - IS THERE A SQUARE ON IT?

087_42--> “G” MOUNT - IS THERE A SQUARE ON IT?



087_43--> “A” MOUNT - IS THERE A CROSS ON IT?

087_44--> “B” MOUNT - IS THERE A CROSS ON IT?

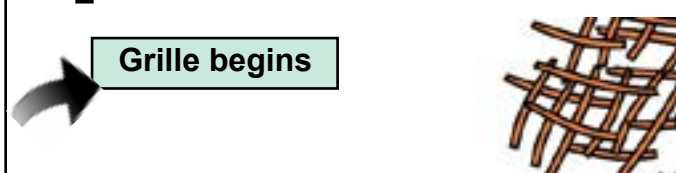
087_45--> “C” MOUNT - IS THERE A CROSS ON IT?

087_46--> “D” MOUNT - IS THERE A CROSS ON IT?

087_47--> “E” MOUNT - HAS A CROSS ON ANY OF THEM?

087_48--> “F” MOUNT - IS THERE A CROSS ON IT?

087_49--> “G” MOUNT - IS THERE A CROSS ON IT?



087_50--> “A” MOUNT - IS THERE A GRILLE ON IT?

087_51--> “B” MOUNT - IS THERE A GRILLE ON IT?

087_52--> “C” MOUNT - IS THERE A GRILLE ON IT?

087_53--> “D” MOUNT - IS THERE A GRILLE ON IT?

087_54--> “E” MOUNT - HAS A GRILLE ON ANY OF THEM?

087_55--> “F” MOUNT - IS THERE A GRILLE ON IT?

087_56--> “G” MOUNT - IS THERE A GRILLE ON IT?



087_57--> “A” MOUNT - ARE THERE CROSSBARS ON IT?

087_58--> “B” MOUNT - ARE THERE CROSSBARS ON IT?

087_59--> “C” MOUNT - ARE THERE CROSSBARS ON IT?

087_60--> “D” MOUNT - ARE THERE CROSSBARS ON IT?

Updated Feb. 25th, 2023

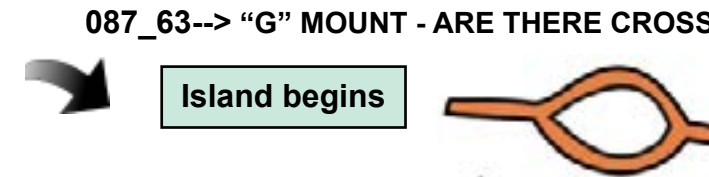
Epigenologist Registration No. _____
 Epigenologist License No. _____

Marks on Mounts 087 cont...

087_61--> “E” MOUNT - HAS A CROSSBARS ON ANY OF THEM?

087_62--> “F” MOUNT - ARE THERE CROSSBARS ON IT?

087_63--> “G” MOUNT - ARE THERE CROSSBARS ON IT?



087_64--> “A” MOUNT - ARE THERE ISLAND ON IT?

087_65--> “B” MOUNT - ARE THERE ISLAND ON IT?

087_66--> “C” MOUNT - ARE THERE ISLAND ON IT?

087_67--> “D” MOUNT - ARE THERE ISLAND ON IT?

087_68--> “E” MOUNT - IS THERE AN ISLAND ON ANY OF THEM?

087_69--> “F” MOUNT - ARE THERE ISLAND ON IT?

087_70--> “G” MOUNT - ARE THERE ISLAND ON IT?



087_71--> “A” MOUNT - ARE THERE ANY DOTS, SPOTS OR BLOTCHES ON IT?

087_72--> “B” ARE THERE ANY DOTS, SPOTS OR BLOTCHES ON IT?

087_73--> “C” MOUNT - ARE THERE ANY DOTS, SPOTS OR BLOTCHES ON IT?

087_74--> “D” MOUNT - ARE THERE ANY DOTS, SPOTS OR BLOTCHES ON IT?

087_75--> “E” MOUNT - IS THERE ANY DOTS, SPOTS OR BLOTCHES ON ANY OF THEM?

087_76--> “F” MOUNT - ARE THERE ANY DOTS, SPOTS OR BLOTCHES ON IT?

087_77--> “G” MOUNT - AARE THERE ANY DOTS, SPOTS OR BLOTCHES ON IT?

File ID: EIM_Manual Chptr-2 Pg 077-082 Exam-1 Tutorial 8x11.pdf

Epigenologist Registration No. _____
 Epigenologist License No. _____

Tips & Notes

TIP--> 087_54 CIRCLES

...on any Mount are usually made up of independent **DDIF-Indentations** crossing in all directions. They cannot be a part of a major **DDIF-Indentations** or splits that branch off from them. For example, Head, Heart Life Wotk Edthics Issue’s **DDIF-Indentations**, etc.

Tips & Notes

TIP--> 087_78 IMPERFECT STAR

...on any Mount are usually very noticable but be careful as these marks must be prominent and well formed. These marks are usually made up of independent **DDIF-Indentations** crossing in all directions. They cannot be a part of a major **DDIF-Indentations** or splits that branch off from them. For example, Head, Heart Life Work Ethics **DDIF-Indentations**, etc.

TIP--> 087_85 MORE THAN 3 VERTICAL CREASES

...on any Mount are usually very noticable but be careful as these marks must be prominent and well formed. These marks are usually made up of independent **DDIF-Indentations** crossing in all directions. They cannot be a part of a major **DDIF-Indentations** or splits that branch off from them. For example, Head, Heart Life Work Ethics **DDIF-Indentations**, etc.

Marks on Mounts 087 cont...

Imperfect star begins



- 087_78--> “A” MOUNT -ARE THERE IMPERFECT STAR ON IT?
- 087_79--> “B” MOUNT -ARE THERE IMPERFECT STAR ON IT?
- 087_80--> “C” MOUNT -ARE THERE IMPERFECT STAR ON IT?
- 087_81--> “D” MOUNT -ARE THERE IMPERFECT STAR ON IT?
- 087_82--> “E” MOUNT - IS THERE AN IMPERFECT ON ANY OF THEM?
- 087_83--> “F” MOUNT - ARE THERE MPERFECT STAR ON IT?
- 087_84--> “G” MOUNT - ARE THERE MPERFECT STAR ON IT?

More than 3 vertical Grooves begin



- 087_85--> “A” MOUNT - ARE THERE MORE THAN 3 VERTICAL GROOVES ON IT?
- 087_86--> “B” MOUNT - ARE THERE MORE THAN 3 VERTICAL GROOVES ON IT?
- 087_87--> “C” MOUNT - ARE THERE MORE THAN 3 VERTICAL GROOVES ON IT?
- 087_88--> “D” MOUNT - ARE THERE MORE THAN 3 VERTICAL GROOVES ON IT?
- 087_89--> “E” MOUNT - ARE THERE MORE THAN 3 VERTICAL GROOVES ON ANY OF THEM?
- 087_90--> “F” MOUNT - ARE THERE MORE THAN 3 VERTICAL GROOVES ON IT.
- 087_91--> “G” MOUNT - ARE THERE MORE THAN 3 VERTICAL GROOVES ON IT.